

- Proposed Station Rebuild
- Preliminary Preferred Route
- Proposed Station (Approximate)
- Expressway / Highway
- Major Roads
- Railway

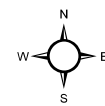
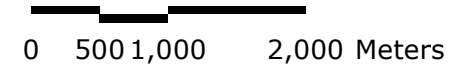
PRELIMINARY PREFERRED ROUTE 1

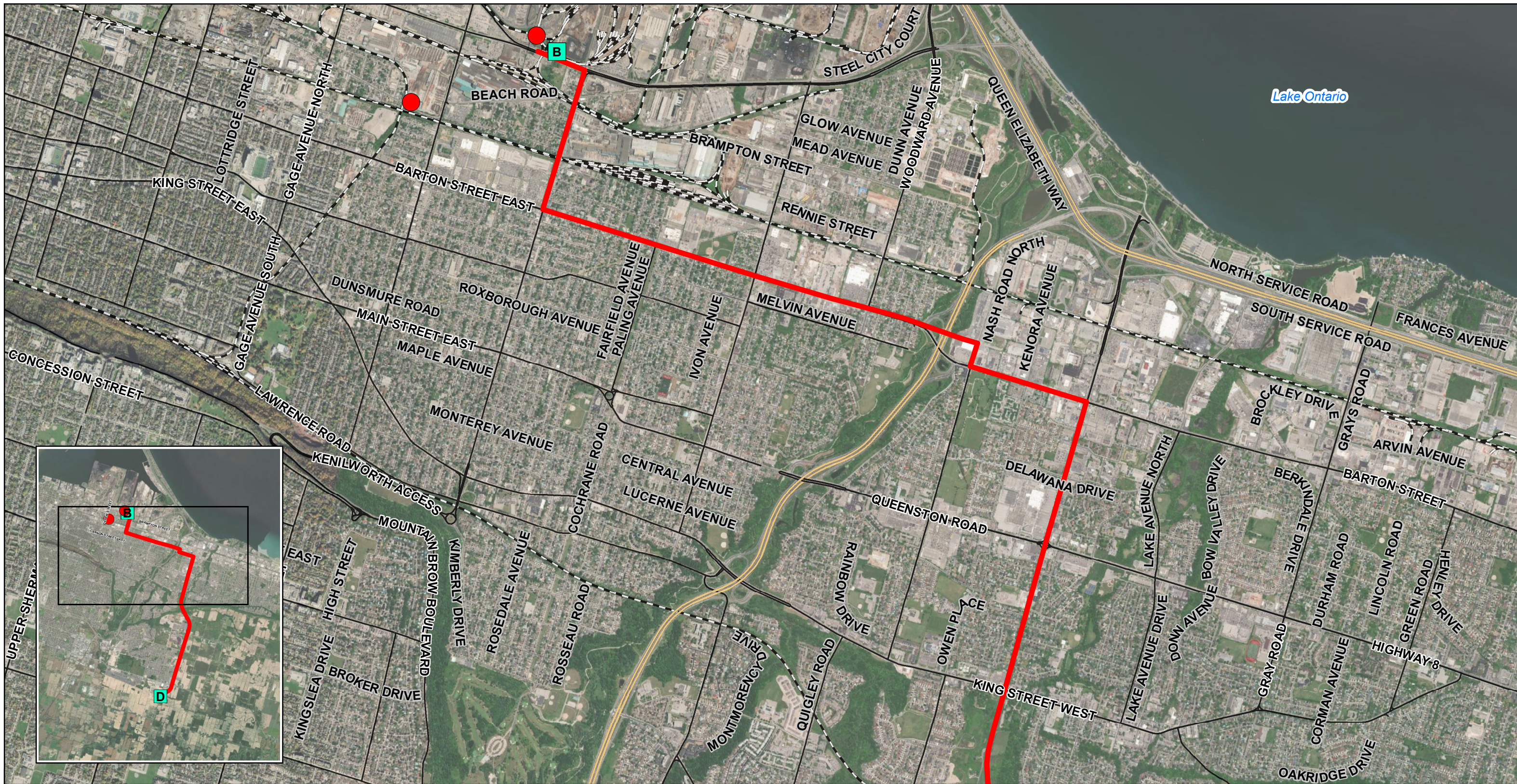


MAP DRAWING INFORMATION:
DATA PROVIDED BY MNRF, ENBRIDGE
AERIAL PROVIDED BY ESRI

MAP CREATED BY: DU
MAP CHECKED BY: AL
MAP PROJECTION: NAD 1983 UTM Zone 17N

SCALE 1:55,000





- Proposed Station Rebuild
- Proposed Station (Approximate)
- Preliminary Preferred Route
- Expressway / Highway
- Major Roads
- Railway
- Local / Street

PRELIMINARY PREFERRED ROUTE 1

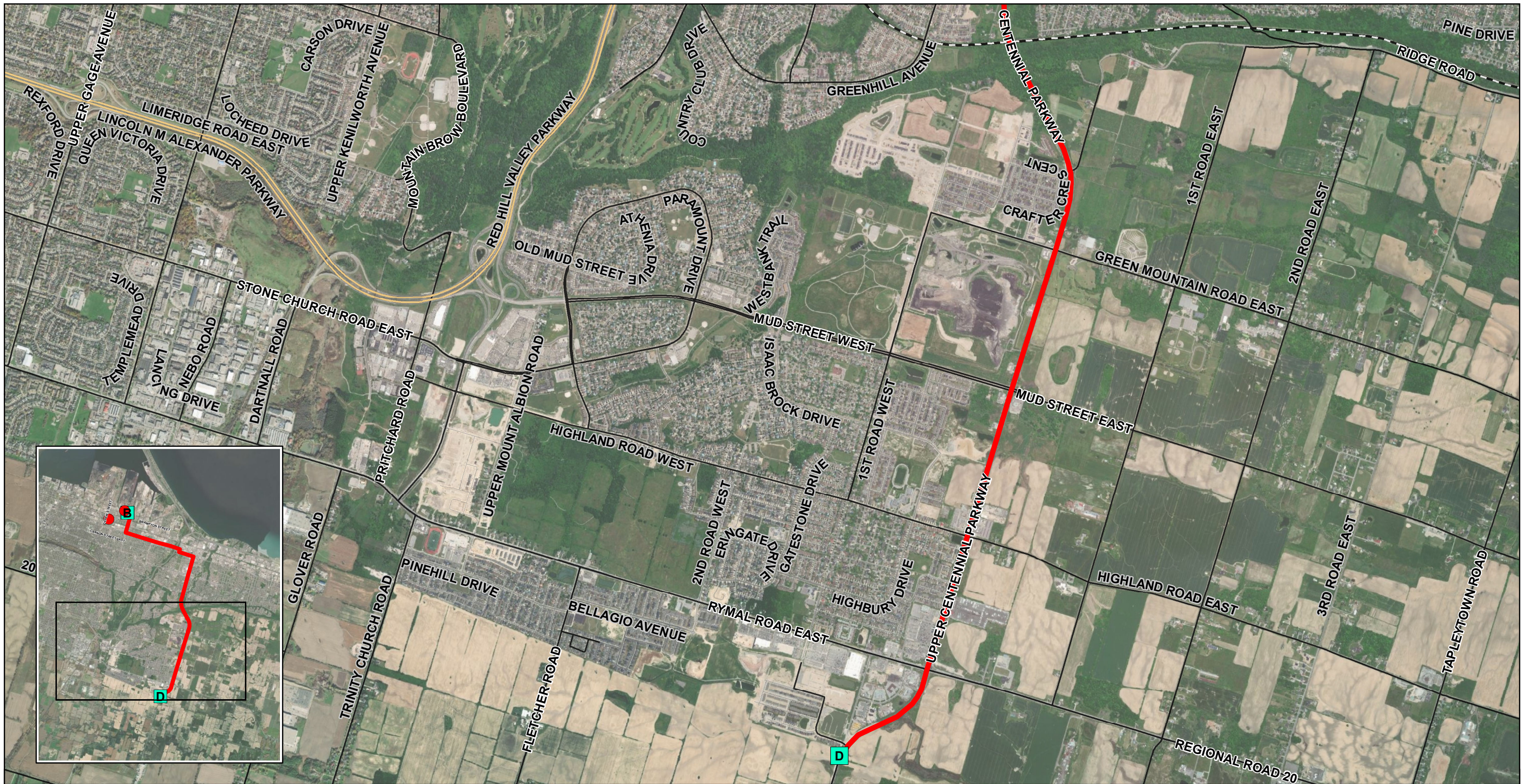


MAP DRAWING INFORMATION:
 DATA PROVIDED BY MNRF, ENBRIDGE
 AERIAL PROVIDED BY ESRI
 MAP CREATED BY: DU
 MAP CHECKED BY: AL
 MAP PROJECTION: NAD 1983 UTM Zone 17N

SCALE 1:25,000

0 250 500 1,000 Meters

PROJECT: 22-5167 STATUS: DRAFT DATE: 2023-02-17



- Proposed Station Rebuild
- Preliminary Preferred Route
- Major Roads
- Railway
- Proposed Station (Approximate)
- Expressway / Highway
- Local / Street

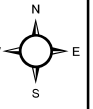
PRELIMINARY PREFERRED ROUTE 1



MAP DRAWING INFORMATION:
DATA PROVIDED BY MNRF, ENBRIDGE
AERIAL PROVIDED BY ESRI

MAP CREATED BY: DU
MAP CHECKED BY: AL
MAP PROJECTION: NAD 1983 UTM Zone 17N

SCALE 1:25,000



PROJECT: 22-5167 STATUS: DRAFT DATE: 2023-02-17