

Please mark the final grading with an inverted “T”

Please mark the final grade on the foundation with an inverted “T”. This will clearly identify the intended meter and riser location to the service installation crews.* The horizontal line is to indicate the level of the final grade, and the vertical line is to indicate the location of the service riser. Please note that the meter set will hang to the right side of the riser.

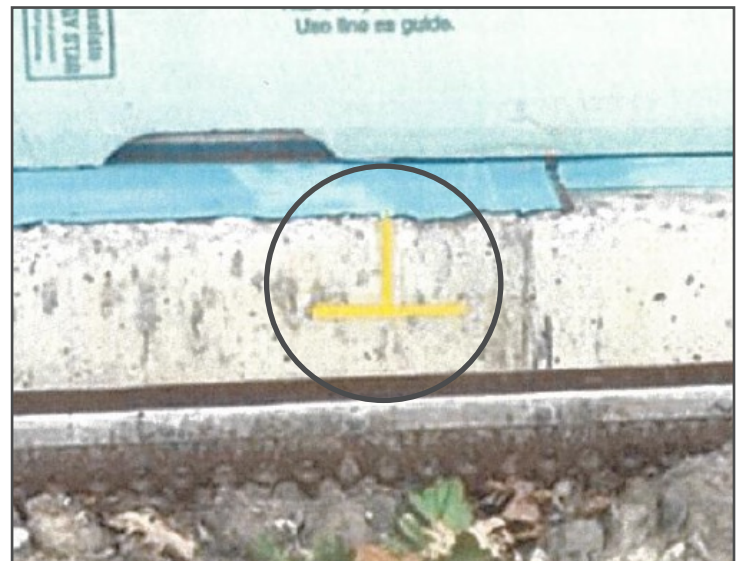
Purpose:

- By using the inverted “T” to mark the meter and riser location, meter sets will be installed within the correct height range, ensuring that the safety shut off valve is continually accessible above grade.
- Implementing consistent processes aligns with Enbridge Gas’ continued focus on safety for the public and our employees.

Benefits:

- Identifying both the meter location and grade level at the time of the meter and service installation will help Enbridge Gas ensure the installation is in the correct location. This will help avoid potential installation delays and costly adjustments to amend an incorrect location.

*If a location conflict exists, the installation crew may select an alternate location in proximity to the inverted ‘T’ in order to mitigate clearance/code issues. If the location is not marked, the installation crews will install to the location provided on the application for service, subject to clearance.



Thank you.

Enbridge Gas