



Overlea Station Relocation Project

Virtual Information Session

Overlea Station Relocation Project Virtual Information Session



Welcome

- Press the next button to navigate to the next slide at any time.
- To return to the previous slide, press the previous button.
- You can mute the audio at any time by pressing the speaker icon.
- The presentation slides, as well as the audio script, are available for download (see the Resources tab in the top right corner).
- Questions and comments can be submitted using the questionnaire found in the Resources tab.
- If you would like to receive future project updates, please complete the "Contact Information" section of the questionnaire.

Our Commitment

- Enbridge Gas is committed to involving Indigenous communities, agencies, interest groups, and community members.
- Enbridge Gas will provide up-to-date information in an open, honest, and respectful manner, and will carefully consider your input.
- Enbridge Gas provides safe and reliable delivery of natural gas to more than 3.9 million residential, commercial, and industrial customers.
- Enbridge Gas is committed to environmental stewardship and conducts its operations in an environmentally responsible manner.

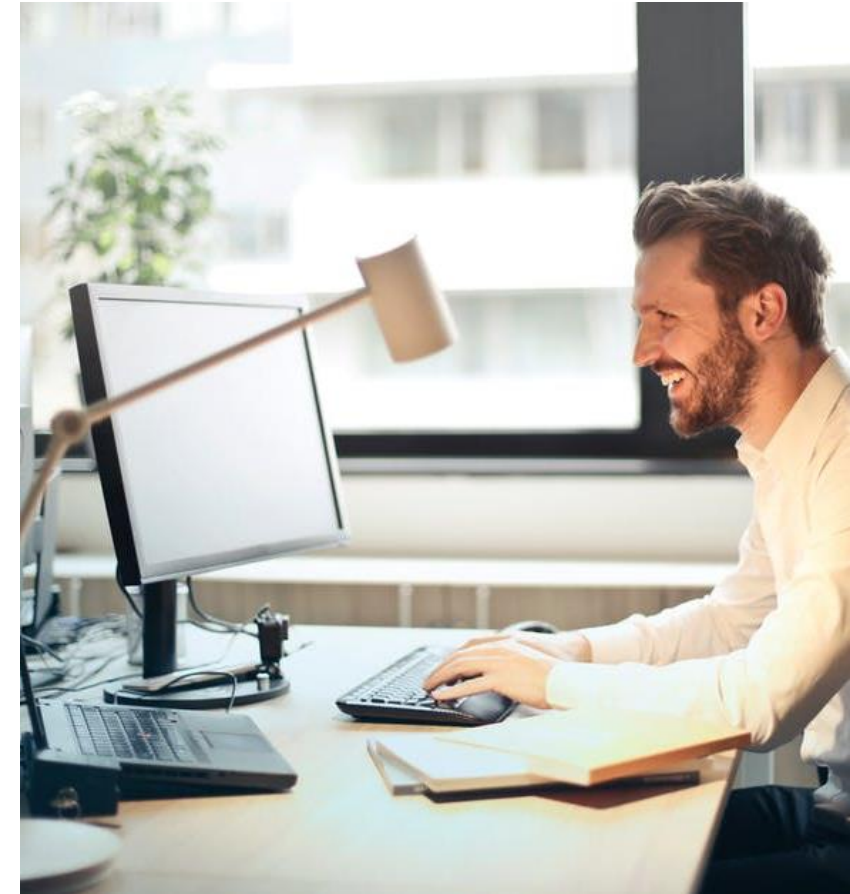


Overlea Station Relocation Project Virtual Information Session



Purpose of the Information Sessions

- Consult with Indigenous communities and engage with members of the public and regulatory authorities regarding the proposed pipeline route, potential impacts, and proposed mitigation.
- Provide an opportunity for these individuals and any affected landowners and the public to review the proposed project, and to ask any questions and/or provide comments to representatives from Enbridge Gas and Stantec.
- Print copies of these Information Session materials are also available for in-person review at:
 - Toronto Public Library: 48 Thorncliffe Park Drive, Toronto, ON M4H 1J7



Overlea Station Relocation Project Virtual Information Session



Enbridge Inc.'s Indigenous Peoples Policy

Enbridge acknowledges and respects the diversity of Indigenous peoples living in the areas where we operate. We understand that in the past, Indigenous Peoples have suffered destructive impacts on their social and economic well-being. We also recognize the importance of reconciliation between Indigenous communities and the wider society. We believe that fostering positive relationships with Indigenous peoples, based on mutual respect and common goals, can lead to positive outcomes for Indigenous communities. Therefore, Enbridge is committed to building sustainable relationships with Indigenous Nations and groups in the regions where we do business. To achieve this, Enbridge will abide by the following principles:

- We respect Indigenous peoples' legal and constitutional rights and their connection to traditional lands. We will collaborate with Indigenous communities to respect their land and resources and carry out environmentally responsible projects.
- Enbridge understands the significance of the United Nations Declaration on the Rights of Indigenous Peoples within the framework of existing Canadian law and the government's commitments to safeguard the rights of Indigenous Peoples.
- We engage in candid and genuine consultation with Indigenous Peoples through a process that aims to achieve timely and meaningful engagement.
- We are committed to collaborating with Indigenous Peoples to provide them with benefits from Enbridge's projects and operations, which include opportunities in education and training, employment, procurement, business development, and community development.
- We encourage Enbridge employees and contractors to develop an understanding of the history and culture of Indigenous Peoples, in order to foster better relationships between Enbridge and Indigenous communities.



Overlea Station Relocation Project Virtual Information Session



Integrated Resource Planning

- As the energy landscape continues to evolve, there is a growing interest in non-pipe alternatives to meet energy needs.
- Integrated Resource Planning (IRP) is a framework through which Enbridge Gas reviews alternative approaches to meeting energy needs to avoid or defer the build of new infrastructure such as:
 - Delivering more energy without adding new pipelines by using liquefied or compressed natural gas.
 - Reviewing of market-based supply side alternatives.
 - Lowering energy use through effective energy efficiency or demand response programs.
- As Enbridge Gas continues to lead the transition to a low-carbon future, it is dedicated to exploring IRP alternatives where they are in the best interest of communities, the environment, and the company, while considering safety and reliability, cost-effectiveness, optimization, risk management, and public policy.



Overlea Station Relocation Project Virtual Information Session



Project Overview

The proposed Overlea Station Relocation Project will include the decommissioning and construction of various natural gas stations and pipelines in the area of Thorncliffe Park.

Enbridge Gas has identified one preliminary preferred route, due to urban constraints limiting routing options. The preliminary preferred route includes the following construction:

- 1100 m of 8-inch natural gas pipeline, along Overlea Boulevard, from Millwood Road to Thorncliffe Park Drive.
- 340 m of 4-inch pipeline, on Metrolinx-owned private property in the area.
- 100 m of 4-inch pipeline along Leaside Park Drive.
- 50 m of 6-inch pipeline along Thorncliffe Park Drive.

The proposed station construction includes:

- A new natural gas regulating station on Leaside Park Drive.
- A new natural gas regulating station on Thorncliffe Park Drive.

The proposed decommissioning of previous assets includes:

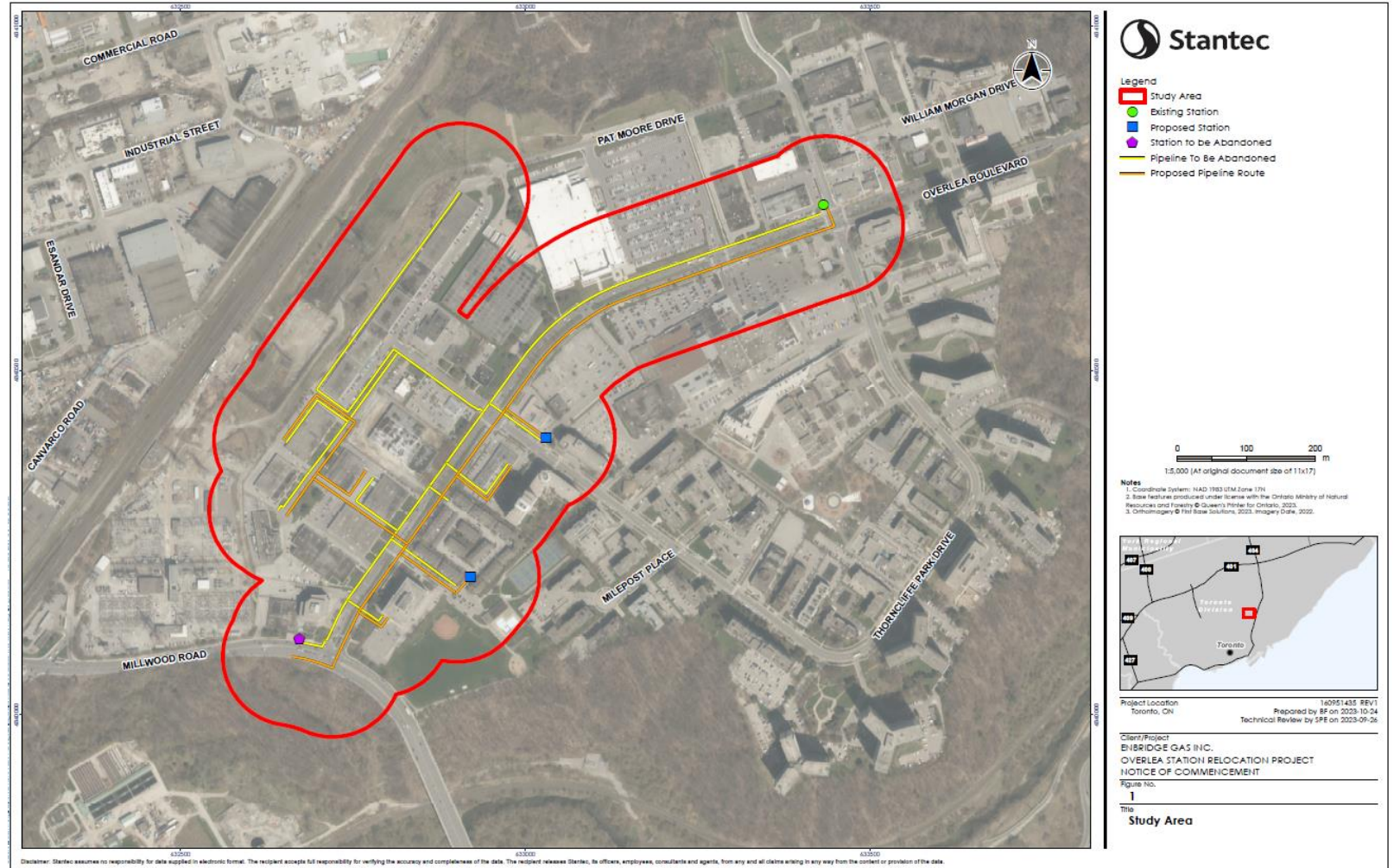
- 1000 m of 12-inch natural gas pipeline along Overlea Boulevard.
- 360 m of 4-inch pipeline, between Overlea Boulevard and Banigan Drive.
- 115 m of 4-inch natural gas pipeline, along Leaside Park Drive and Thorncliffe Park Drive.
- 50 metres of 6-inch natural gas pipeline along Thorncliffe Park Drive.
- A natural gas station located at the intersection of Millwood Drive and Overlea Boulevard.



Overlea Station Relocation Project Virtual Information Session

Project Key Map

- The Preferred Preliminary Route has been developed for the purpose of an assessment of potential environmental and socioeconomic impacts.
- No Alternative Routes have been considered at this time.
- This map does not represent the final project scope/design that will provide access to natural gas to end-use customers.

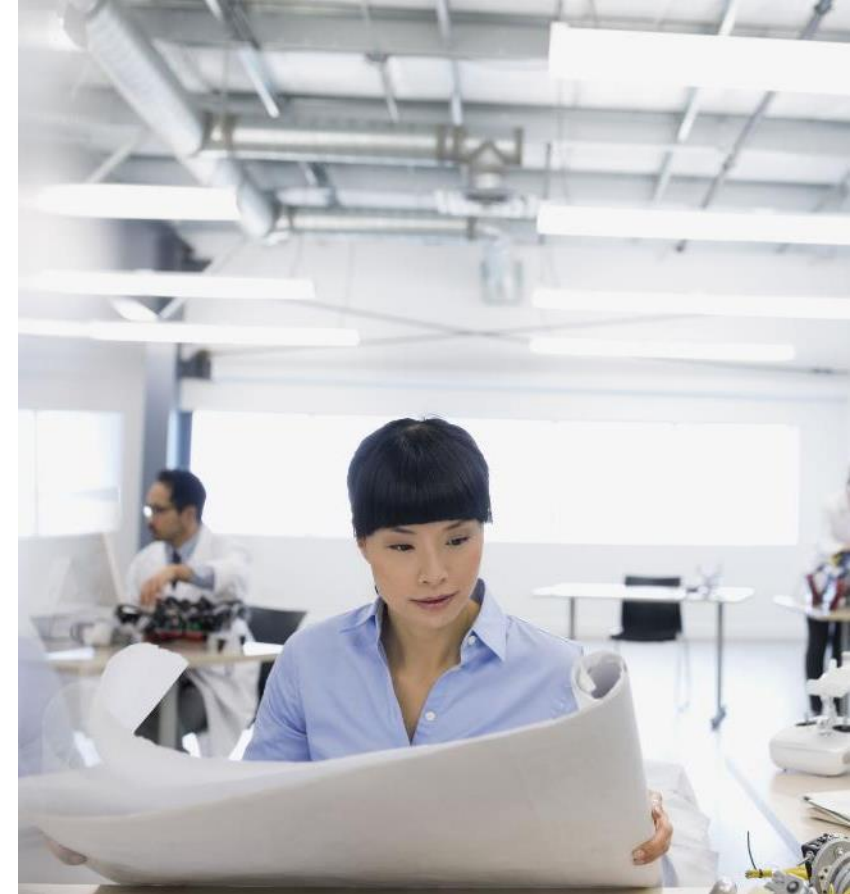


Overlea Station Relocation Project Virtual Information Session



Route Selection Process

- Due to the highly congested corridor, property constraints, and location of proposed subway infrastructure, Enbridge Gas has identified the preliminary preferred route as the most feasible alternative that resolves the conflict with the subway while minimizing the total length and cost of a gas main relocation in order to reinstate the network and maintain service to existing Enbridge Gas customers.
- Any other alternative would result in additional unnecessary lengths of pipe to be relocated resulting in higher costs and additional environmental effects to otherwise achieve the same result. The pipeline will be installed within the municipal road right-of-way, where possible.



Overlea Station Relocation Project Virtual Information Session



Environmental Study Process

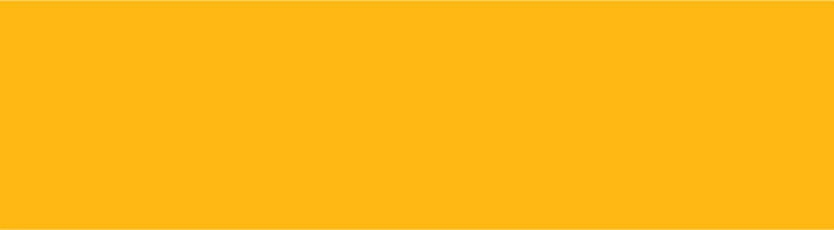
As part of the planning process, Enbridge Gas has retained Stantec to undertake an Environmental Study for the project. The Environmental Study will fulfill the requirements of the Ontario Energy Board's (OEB) "*Environmental Guidelines for the Location, Construction, and Operation of Hydrocarbon Projects and Facilities in Ontario, 8th Edition (2023)*".

The study will:

- Undertake engagement to understand the views of interested and potentially affected parties.
- Consult with Indigenous communities to understand interests and potential impacts.
- Be conducted during the earliest phase of the project.
- Identify potential impacts of the project.
- Develop environmental mitigation and protective measures to avoid or reduce potential impacts.
- Develop an appropriate environmental inspection, monitoring, and follow-up program.



Overlea Station Relocation Project Virtual Information Session



OEB Review and Approval Process

It is anticipated that the Environmental Report (ER) for the study is scheduled to be completed in January 2024. Once complete, Enbridge Gas plans to file a Leave-to-Construct application for the project with the Ontario Energy Board (OEB). The application to the OEB will include the following information on the project:

- The need for the project
- ER and mitigation measures
- Project costs and economics
- Pipeline design and construction
- Land requirements
- Consultation with Indigenous communities

Additional information about the OEB
process can be found at:
www.oeb.ca

The OEB's review and approval are required before the proposed project can proceed. If approved, construction could begin in 2024.

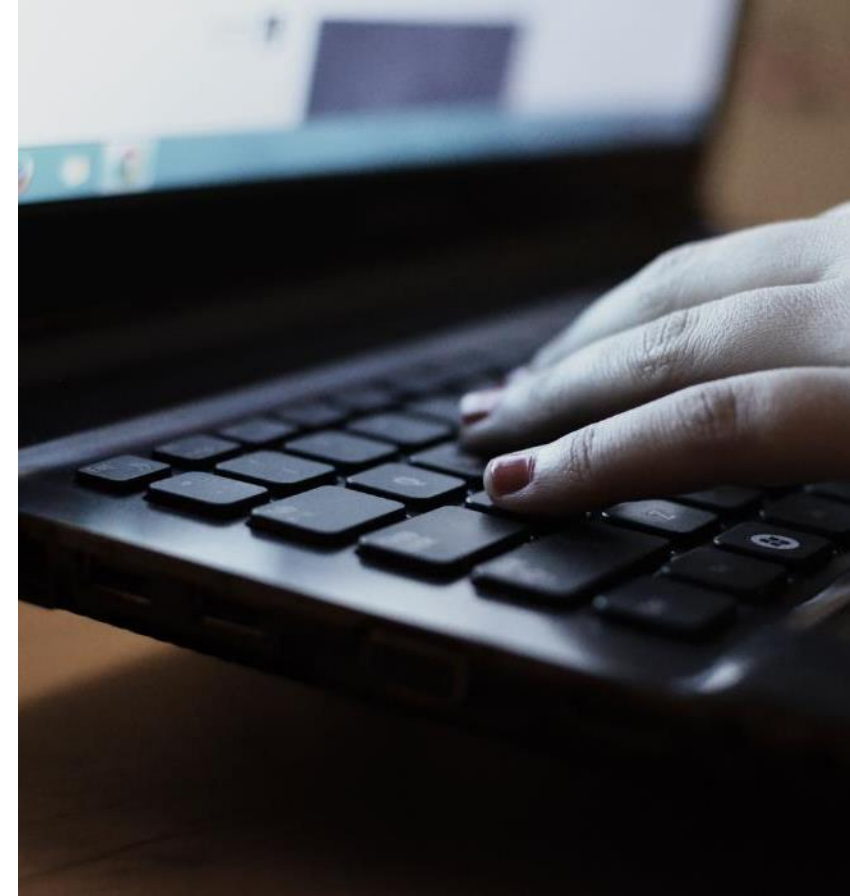


Overlea Station Relocation Project Virtual Information Session

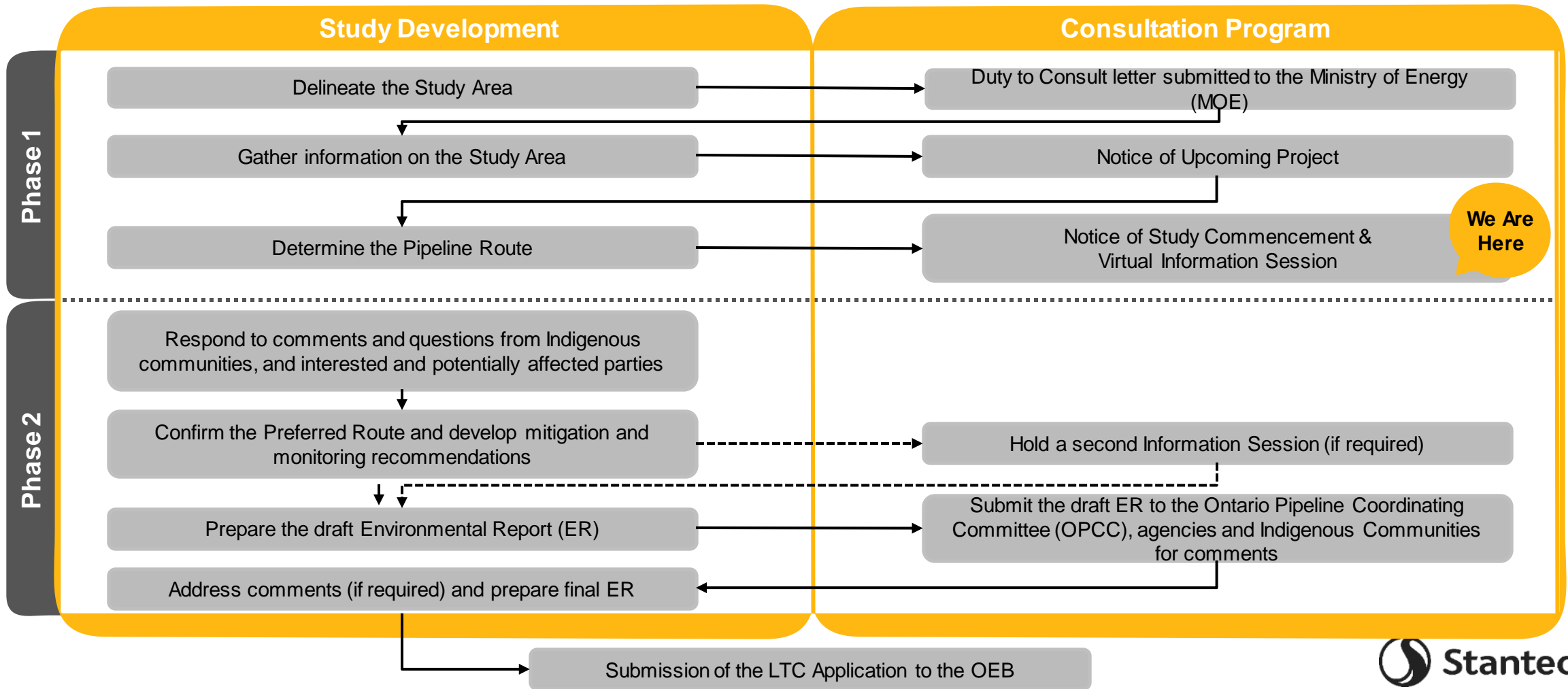


Consultation and Engagement

- Consultation and engagement are key components of the Environmental Report (ER).
- At the outset of the project, Enbridge Gas submits a Project Description to the Ministry of Energy (MOE). Upon review, the MOE determines potential impacts on Aboriginal or treaty rights and identifies Indigenous communities that Enbridge Gas will consult with during the entirety of the project.
- The consultation and engagement program helps identify and address Indigenous community and stakeholder concerns and issues, provides information about the project to the stakeholders and allows for participation in the project review and development process.
- Input during engagement and consultation will be used to help finalize the pipeline route and mitigation plans for the project.
- Once the LTC application is made to the OEB, any party with an interest in the project, including members of the public, can participate in the process.



Overlea Station Relocation Project Virtual Information Session Environmental Study Process



Overlea Station Relocation Project Virtual Information Session



Environment, Health and Safety Policy

Our Commitment

- Enbridge Gas is committed to protecting the health and safety of all individuals affected by our activities.
- Enbridge Gas will provide a safe and healthy working environment and will not compromise the health and safety of any individual.
- Our goal is to have no incidents and mitigate impacts on the environment by working with our stakeholders, peers, and others to promote responsible environmental practices and continuous improvement.
- Enbridge Gas is committed to environmental protection and stewardship, and recognizes that pollution prevention, biodiversity, and resource conservation are key to a sustainable environment.
- All employees are responsible and accountable for contributing to a safe working environment, for fostering safe working attitudes, and for operating in an environmentally responsible manner.



Overlea Station Relocation Project Virtual Information Session



Access and Land Requirements

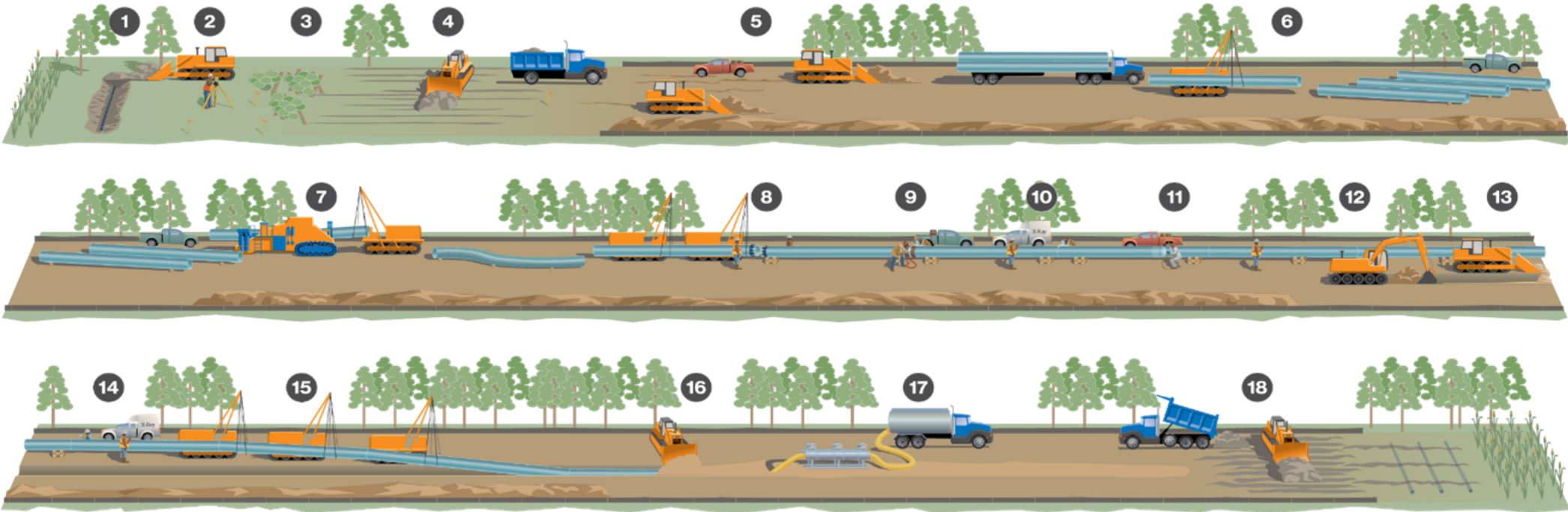
While most of the pipeline route will be constructed within municipal road right-of-way (ROW), some circumstances requiring access agreements, permanent easement or temporary working space during construction could result in the need for additional land outside of the-ROW.

Enbridge Gas has a comprehensive Landowner Relations Program that uses a dedicated Lands Advisor who would:

- Provide direct contact-and-liaison between landowners and Enbridge Gas.
- Be available to the landowner during the length of the project and throughout construction activities.
- Address the concerns and questions of the landowner.
- Act as a singular point of contact for all landowners.
- Address any landowner questions and any legal matters relating to the temporary use of property, access agreements, permanent easements, and impacts or remedies to property.



Constructing an Enbridge Gas Pipeline



- | | | | | | |
|----------------------------|-----------------------------------|-----------------------|---|---|---|
| 1. Pre-construction tiling | 4. Right-of-way topsoil stripping | 7. Field bending pipe | 10. X-ray or ultrasonic inspection, weld repair | 13. Padding trench bottom | 16. Backfilling |
| 2. Surveying and staking | 5. Front-end grading | 8. Lining-up pipe | 11. Field coating | 14. Final inspection and coating repair | 17. Hydrostatic testing |
| 3. Clearing | 6. Stringing pipe | 9. Welding process | 12. Digging the trench | 15. Lowering pipe | 18. Site restoration and post-construction tiling |

Note: The construction infographic is specifically for open-cut steel pipe installation and serves for reference purposes only.

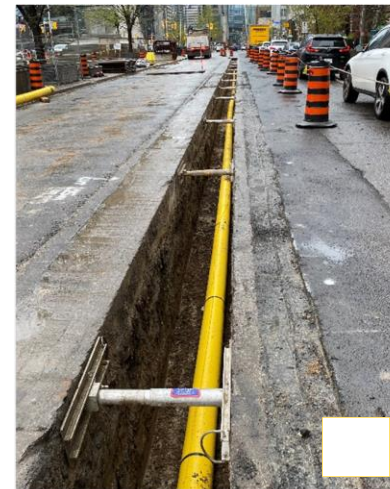
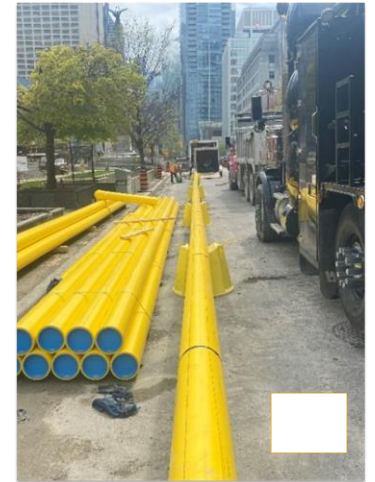
Overlea Station Relocation Project Virtual Information Session



Constructing an Enbridge Gas Pipeline (Continued)

The pipeline construction process includes various procedures, as described in the previous slide.

- **Photo 1 and 2.** Shows a typical Enbridge Gas natural gas pipeline. The Overlea Station-Relocation Project will involve the installation of plastic pipeline ranging from 4 to 12 inches and will be smaller than the pipeline shown in Photo 1.
- **Photo 3:** Represents a typical trench that is created during the installation process.
- **Photo 4:** Represents the process of backfilling a trench and repaving once construction is complete.



Overlea Station Relocation Project Virtual Information Session



Socio-economic Features

The project will mainly be constructed in the existing municipal road right-of-way adjacent to commercial, institutional and residential lands.

Potential Effects

- Temporary increases in noise, dust and air emissions.
- Increased construction traffic volumes.
- Ornamental vegetation clearing along the pipeline route.

Example Mitigation Measures

- Provide access across the construction area.
- Restrict construction to daylight hours and adhere to applicable noise by-laws.
- Develop and implement a Traffic Control Plan.
- Place fencing at appropriate locations for safety.
- Making contact information for a designated Enbridge Gas representative available prior to and throughout construction.
- Implement dust control measures.
- Re-vegetation of cleared ornamental vegetation areas as needed (including seeding/planting).



Overlea Station Relocation Project Virtual Information Session



Cultural Heritage Resources

During construction, cultural heritage features such as archaeological finds, and heritage buildings, fences, and landscapes may be encountered.

Detailed field surveys will be conducted by independent, third-party archaeologists and cultural heritage professionals prior to construction, if required.

Potential Effects

- Damage or destruction of archaeological or historical resources.

Example Mitigation Measures

- Archaeological assessment of the construction footprint, with review and acceptance from the Ministry of Citizenship and Multiculturalism (MCM).
- Cultural heritage assessment (for built heritage features and cultural heritage landscapes) of the construction right-of-way, with review and comment from the MCM.
- Reporting of any previously unknown archaeological or historical resources uncovered or suspected of being uncovered during excavation.



Overlea Station Relocation Project Virtual Information Session



Pipeline Design

The plastic pipeline is designed to meet and/or exceed the regulations of the Canadian Standards Association (Z662 Oil and Gas Pipeline Systems) and the applicable regulations of the Technical Standards and Safety Association (TSSA).

Pipeline Safety and Integrity

Enbridge Gas takes many steps to ensure the safe, reliable operation of our network of natural gas pipelines, including:

- Design, construct, and test our pipelines to meet or exceed requirements set by industry standards and regulatory authorities.
- Continuously monitor the entire network.
- Perform regular field surveys to detect leaks and confirm that corrosion prevention methods are working as intended.

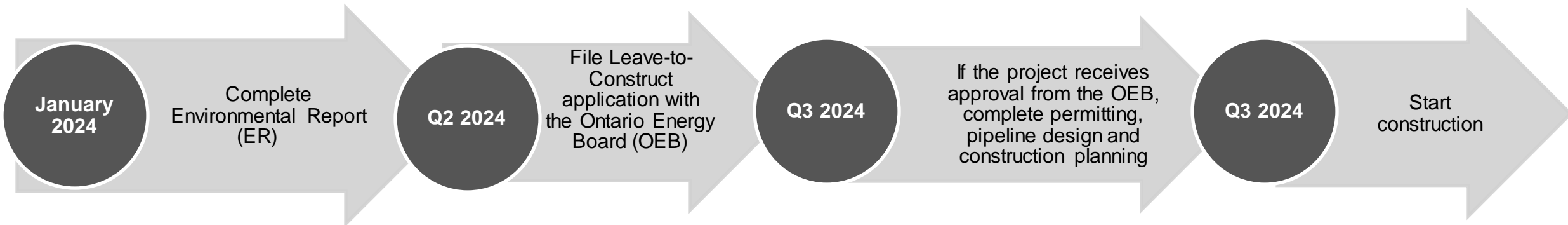


Overlea Station Relocation Project Virtual Information Session



Next Steps

After this Virtual Information Session, Enbridge Gas intends to pursue the following schedule of activities:



Overlea Station Relocation Project Virtual Information Session



Thank You!

On behalf of the project team, thank you for listening to the VIS presentation. Please complete a Questionnaire (located in the Resources Tab) by **December 20th, 2023**, for your comments to be considered as part of the Environmental Report.

Dominique Kelly

Environmental Planner / Project Manager
Assessment & Permitting

Stantec Consulting Ltd.
300 - 1331 Clyde Avenue
Ottawa, ON K2C 3G4
Phone: (226) 789-4883

Email: OverleaER@stantec.com

Kristin Kimpinski

Environmental Advisor
Lands, Permitting & Environment

Enbridge Gas Inc.
101 Honda Blvd.,
Markham, ON, L6C 0M6
Phone: (905) 927-3279

For more information about the proposed project, please visit the Enbridge Gas project website at enbridgegas.com/overleaproject

