


East Harbour Relocation Project

Welcome to our virtual public information session
May 8 to May 21, 2023



Navigating the virtual public information session

Visit the virtual public information session at www.EastHarbourEA.ca for the following materials.

- This presentation;
- An audio-video file of this presentation;
- A transcript of this presentation;
- A high-resolution map of the project; and
- A comment form

We encourage you to submit the online comment form through the virtual public information session website once you have reviewed the materials.

You can also download and submit the PDF version of the comment form by email or contact us to submit comments by another means.

The virtual public information session will be hosted on the website from May 8 to May 21, 2023.



Purpose of the project and virtual public information session

Enbridge Gas Inc. (Enbridge Gas) is proposing a project to address conflicting infrastructure with Cadillac Fairview's proposed mixed use development project within the City of Toronto.

Consultation with Indigenous communities and engagement with stakeholders are fundamental components of the planning and environmental study for the project.

The purpose of the virtual public information session is to provide:

- Information about the project.
- The opportunity to ask questions and provide feedback.
- All feedback and input received will be used to:
- Inform the Environmental Report; and
- Identify potential issues and site-specific mitigation, if required.

Enbridge Gas Indigenous Peoples Policy

Enbridge Gas recognizes the diversity of Indigenous Peoples who live where we work and operate. We understand that the history of Indigenous Peoples has had destructive impacts on the social and economic well-being of Indigenous Peoples. Enbridge Gas recognizes the importance of reconciliation between Indigenous communities and the broader society. Positive relationships with Indigenous Peoples, based on mutual respect and focused on achieving common goals, will create constructive outcomes for both Indigenous communities and for Enbridge Gas.

Enbridge Gas commits to pursuing sustainable relationships with Indigenous Nations and groups in proximity to where Enbridge Gas conducts business. To achieve this, Enbridge Gas will govern itself by the following principles:

- **We recognize** the legal and constitutional rights possessed by Indigenous Peoples, and the importance of the relationship between Indigenous Peoples and their traditional lands and resources. We commit to working with Indigenous communities in a manner that recognizes and respects those legal and constitutional rights and the traditional lands and resources to which they apply, and we commit to ensuring that our projects and operations are carried out in an environmentally responsible manner.
- **We recognize** the importance of the United Nations Declaration on the Rights of Indigenous Peoples (UNDRIP) within the context of existing Canadian law and the commitments that the government has made to protecting the rights of Indigenous Peoples.

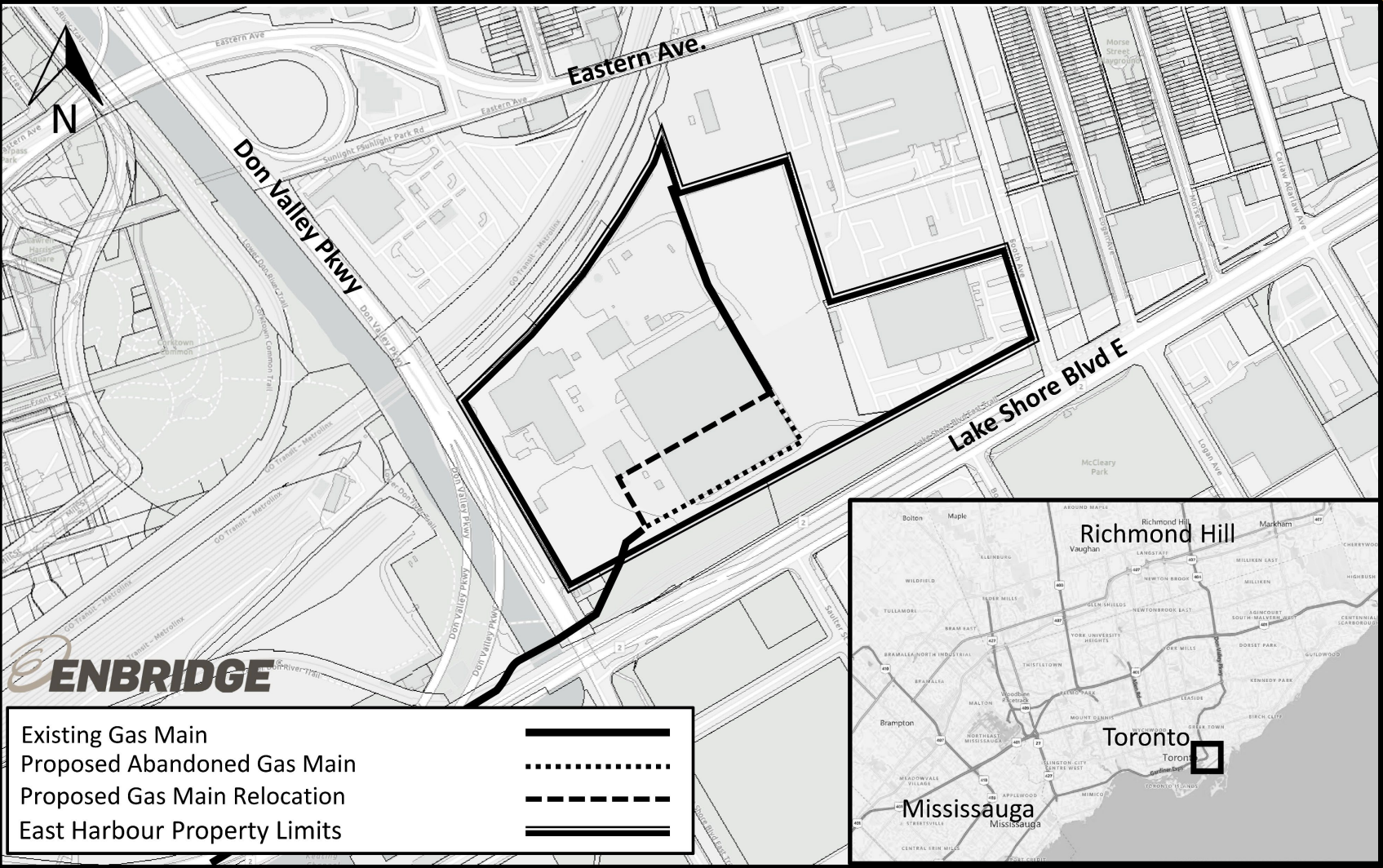
Enbridge Gas Indigenous Peoples Policy continued

- **We engage** in forthright and sincere consultation with Indigenous Peoples about Enbridge Gas' projects and operations through processes that seek to achieve early and meaningful engagement so their input can help our projects that may occur on lands traditionally used by Indigenous Peoples.
- **We commit** to working with Indigenous Peoples to achieve benefits for them resulting from Enbridge Gas' projects and operations, including opportunities in training and education, employment, procurement, business development, and community development.
- **We foster** understanding of the history and culture of Indigenous Peoples among Enbridge Gas employees and contractors in order to create better relationships between Enbridge Gas and Indigenous communities.

This commitment is a shared responsibility involving Enbridge Gas and its affiliates, employees and contractors, and we will conduct business in a manner that reflects the above principles. Enbridge Gas will provide ongoing leadership and resources to ensure the effective implementation of the above principles, including the development of implementation strategies and specific action plans.

Enbridge Gas commits to periodically review this policy so that it remains relevant and respects Indigenous culture and varied traditions.

Project overview



To resolve a conflict of an existing pipeline with Cadillac Fairview’s proposed 24-acre mixed use development project, a 400 m pipeline relocation is being considered.

The East Harbour Relocation Project involves the relocation of approximately 400 m of 20-inch natural gas main that extends from Enbridge’s Station B at 405 Eastern Avenue to Lake Shore Boulevard East.

Ontario Energy Board review and approval process

An Environmental Study is being completed for this project and an Environmental Report will be prepared in accordance with the Ontario Energy Board's (OEB) *Environmental Guidelines for the Location, Construction and Operation for Hydrocarbon Pipelines and Facilities in Ontario*. These guidelines provide the planning requirements for new projects and the mitigation required for the construction of these projects.



Who is the OEB?

- The OEB is the body that regulates the natural gas sector in Ontario to ensure that the public interest is served and protected. Once the Environmental Report is completed and the comment period has ended, Enbridge Gas will file a Leave to Construct application with the OEB.
- The OEB may order a written or oral hearing based upon the complexity of the project and the level of public interest. Members of the public may request to participate in the hearing. The OEB will then make a decision about the application.
- Construction of the project can only proceed if the OEB grant Leave to Construct.

Environmental study and approval process

Phase 1 - Planning

- Identify feasible route alternatives and study areas
- Notify Indigenous communities and key stakeholders
- Understand existing environmental conditions
- Complete field studies

Phase 2 - Evaluation

- Hold virtual public information session
- Evaluate route alternatives
- Select preferred route
- Identify potential effects and mitigation measures based on the preferred route
- Assess cumulative effects of the proposed project
- Complete the project's Environmental Report

Phase 3 - Approvals

- Submit Environmental Report to Ontario Pipeline Coordinating Committee
- File application for Leave to Construct with OEB
- OEB Hearing and Decision
- Obtain other permits and approvals

Ongoing consultation with Indigenous communities and engagement with stakeholders

Analysis of the preferred route

The analysis of the preferred route involves an evaluation of the following:

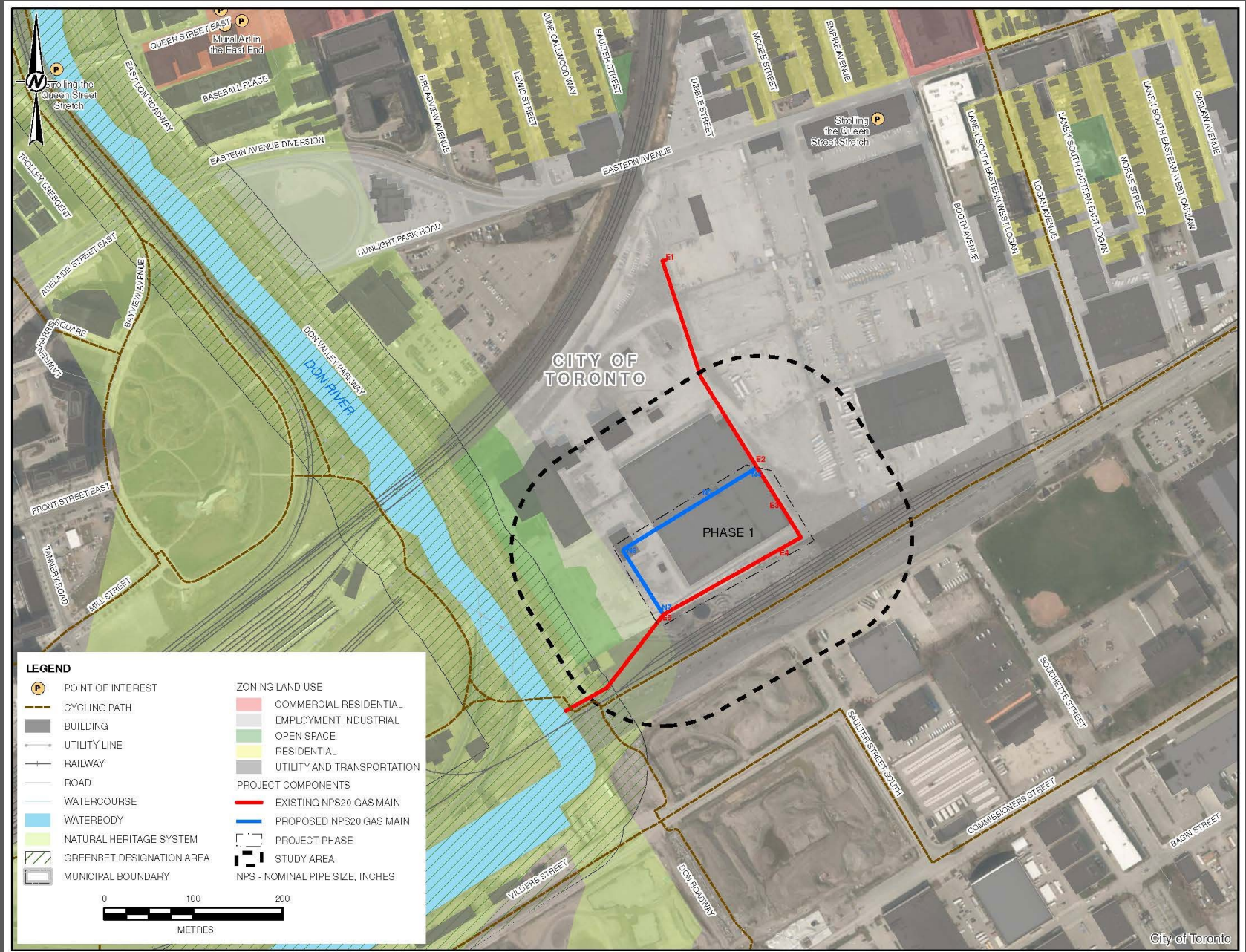
- Collection of information about existing conditions.
- Consideration of the following:
 - Environmental features (e.g., sensitive biophysical features).
 - Social and cultural heritage features (e.g., existing and future land use, heritage resources).
 - Technical constraints and benefits (e.g., existing linear corridors, reliability of gas supply, safety).
 - Economic impacts or benefits.
- Identification of the potential adverse environmental and socio-economic effects of each route alternative.
- Consideration of Indigenous communities and stakeholder input.

Environmental study findings



- The desktop research and field studies considered the biophysical, socio-economic, and cultural environments.
- Understanding the existing conditions helps to identify the potential for environmental or social effects.
- Mitigation measures, including avoidance, will be confirmed once the preferred route is selected, and input is received from interested parties.
- The results of the environmental study will be documented in the Environmental Report.

Study area features

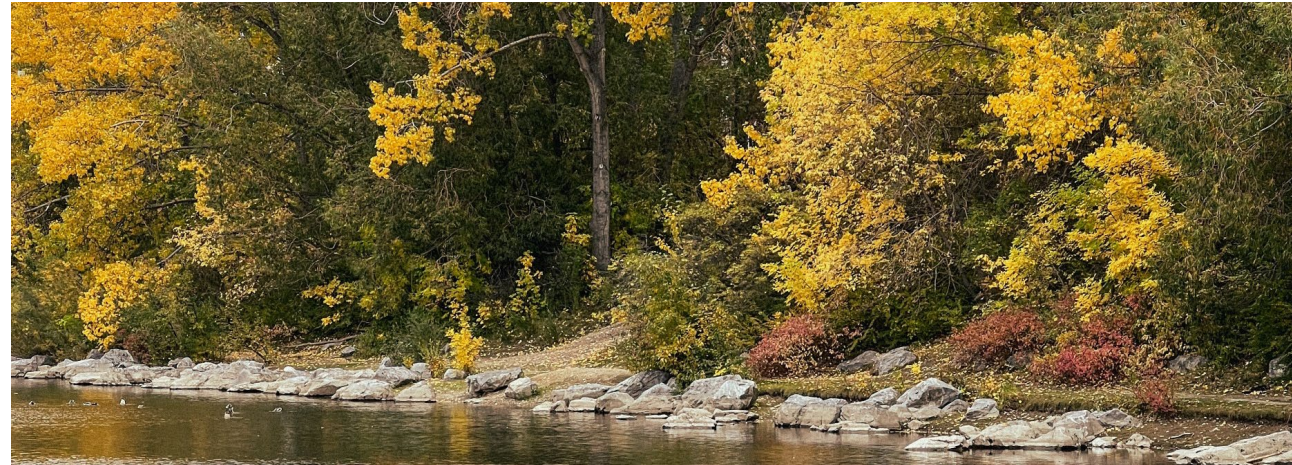


City of Toronto

Biophysical environment

Features found within the study area include:

- Don River flood plain.
 - Engineered flood plain area and Toronto and Region Conservation Authority (TRCA) Regulated Area within the study area.
- Potential species at risk habitat.
 - Species that occupy human-made structures.



Biophysical environment continued



Potential effects may include removal of vegetation, temporary alteration of wildlife habitat during construction, and increased erosion and sedimentation.

Mitigation measures may include:

- Minimize temporary workspace areas and clearing of existing vegetation.
- Avoid vegetation clearing during the migratory bird nesting season.
- Implement erosion and sediment control (ESC) measures.
- Clean up and restore construction areas as soon as possible after construction.
- Where there is potential for soil erosion, engage an inspector with appropriate qualifications to identify the need for and location of ESC measures prior to the commencement of work in the area.

Geology, Soils, and Groundwater

Features found within the study area include:

- Local surficial geology consisting of mostly sandy fill soils overlying organic soil deposits and deeper glacial till.
- The water table is close to ground surface.
- No records of water supply wells in the study area, municipal water service is available.
- The study area is in an area designated as a highly vulnerable aquifer.
- Soil and groundwater contamination is suspected in the study area due to historical industrial land uses.

Mitigation measures include:

- Implementation of specific mitigation measures to protect soils from erosion and contamination during stripping, storage and reinstatement activities.
- Implementation of best management practices to govern working around groundwater, potential contaminants, the storage of materials, fueling operations, equipment checks and maintenance.



Socio-economic environment



Features found within the study area include:

- Industrial Employment Office, Utility Transportation, Open Space Recreation, and Flood Hazard lands
- Railways and utility lines.
- Waste transfer station.
- No protected areas or official/marked trails.
- No healthcare or urgent care facilities.
- No school, churches or cemeteries.
- No residences.

Socio-economic environment continued



Potential temporary effects may include:

- Nuisance effects such as noise and dust.
- Road or lane closures and increased traffic volume.
- Temporary limited access to recreational, and business/commercial areas along the road where construction occurs.

Mitigation measures may include:

- Compliance with municipal noise by-laws and land use plans.
- Implement best management practices to minimize noise and dust emissions.
- Develop and implement a traffic control and protection plan.
- Provide the schedule for road closures and construction to municipalities, directly affected and adjacent property owners and businesses.
- Repair impacts to public roadways, sidewalks or other paved areas.

Cultural environment



A photo taken in 1926 of the construction of a gas pipeline from Eastern Avenue to Don Roadway in Toronto.

Cultural Heritage:

- A review of known built heritage resources and cultural heritage landscapes was undertaken using archival mapping and municipal heritage registers.
- A Ministry of Citizenship and Multiculturalism Criteria for Evaluating Potential for Built Heritage Resources and Cultural Heritage Landscapes checklist was then completed.
- A Cultural Heritage Report: Existing Conditions and Preliminary Impact Assessment is recommended for this project.

Cultural environment continued

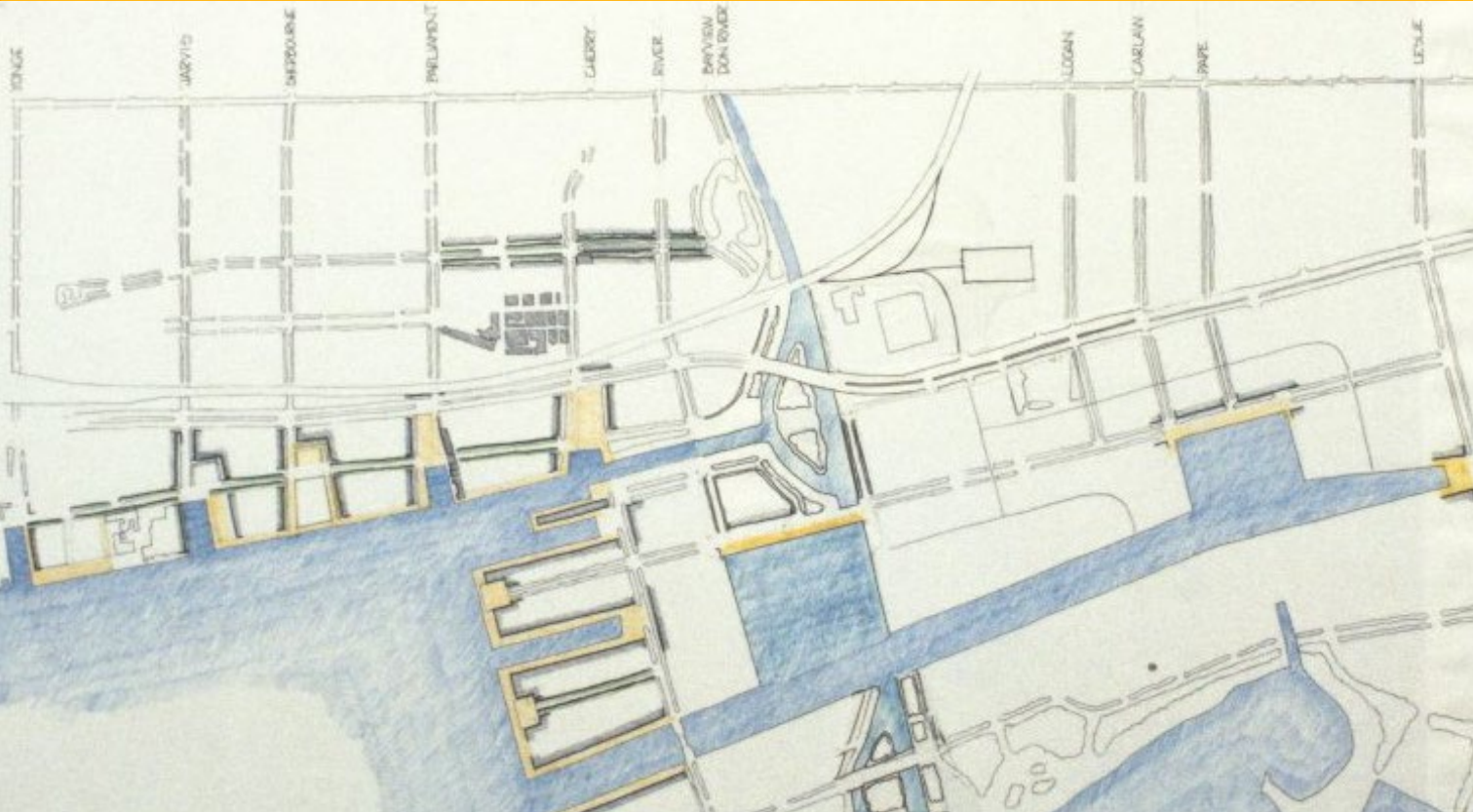
Archaeology:

- A review of the relevant archaeological, historical, and environmental literature, conducted as part of the Archaeological Review, concluded the southwest portion of the Study Area has archaeological potential.
- A review of the interim Master Plan of Archaeological Resources for the City of Toronto (ASI 2004) and the Archaeological Master Plan of the Central Waterfront for the City of Toronto (ASI 2003) supports this conclusion.
- A review of the previous archaeological assessments determined the Study Area has been subject to Stage 1 Archaeological Assessment and has been recommended for Stage 2 Archaeological Assessment.
- The Stage 2 assessment will consist of test trenches to identify any deeply buried archaeological resources.



A photo taken in 1986 of the Port Industrial District looking north to the Don Valley Parkway. The project area can be seen on the right side of the photo.

Cultural environment continued (2)



Potential temporary effects may include:

- Disturbance to areas with archaeological potential.
- Disturbance to built heritage resources and cultural heritage landscapes.

- Mitigation measures may include:
 - Complete further studies in areas that have archaeological potential (i.e., Stage 2 archaeological assessment) along the preferred route, prior to construction.
 - Complete a Cultural Heritage Report: Existing Conditions and Preliminary Impact Assessment to identify and assess potential impacts to known and potential cultural heritage resources.
 - If previously undocumented archaeological resources are discovered during construction, cease construction immediately, engage a licensed archaeologist to carry out further archaeological studies, and report the findings

Typical pipeline design and construction

- Enbridge Gas pipelines are designed to meet or exceed the regulations of the Canadian Standards Association (Z662 Oil and Gas Pipeline Systems) and the applicable regulations of the Technical Standards & Safety Association.
- Construction activities are temporary and transitory.
- After construction, Enbridge Gas takes many steps to ensure safe, reliable operation of the network of our natural gas pipelines.

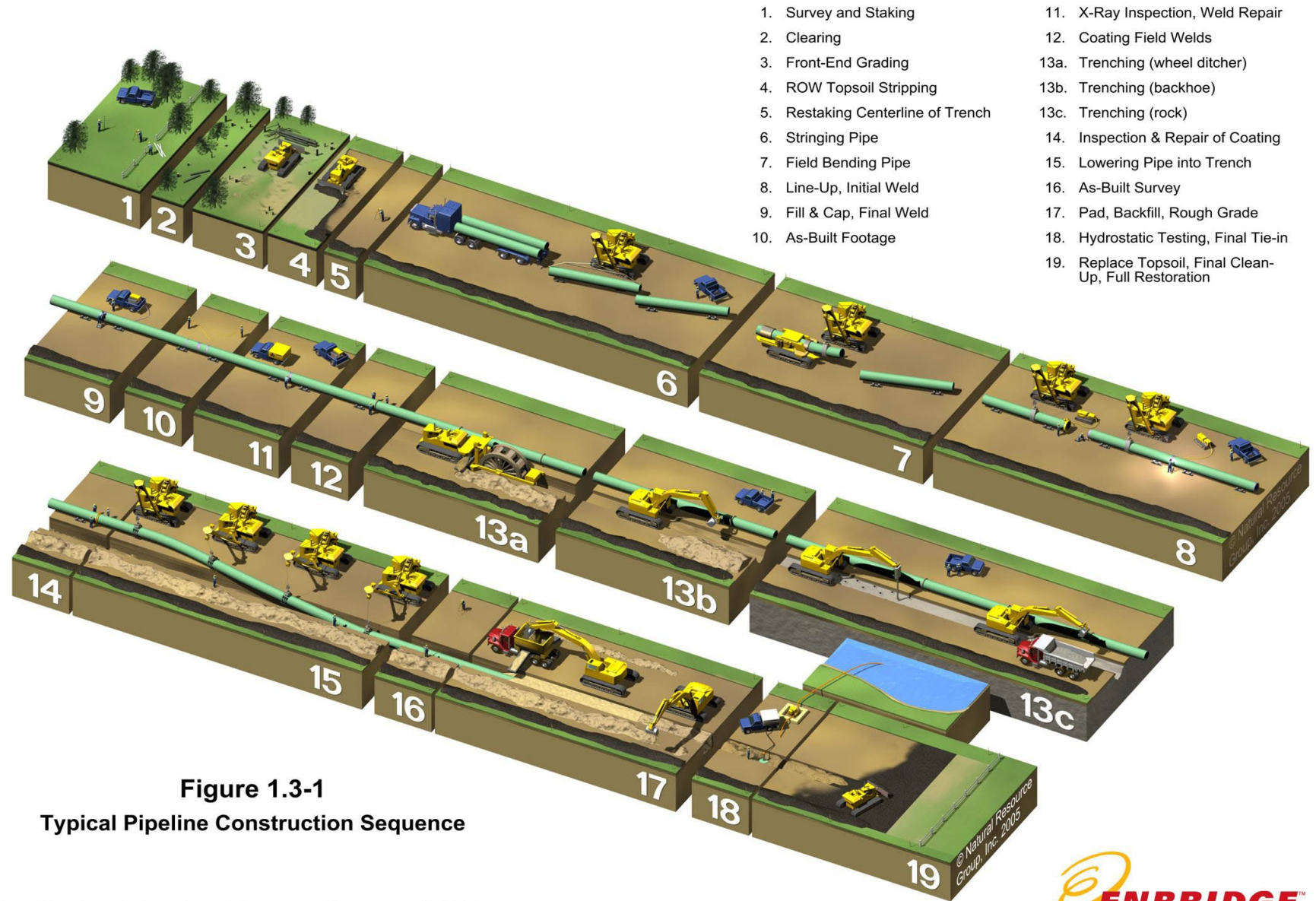


Figure 1.3-1
Typical Pipeline Construction Sequence

Used By Permission Natural Resource Group, Inc. © 2010



Our commitment to environment, health and safety

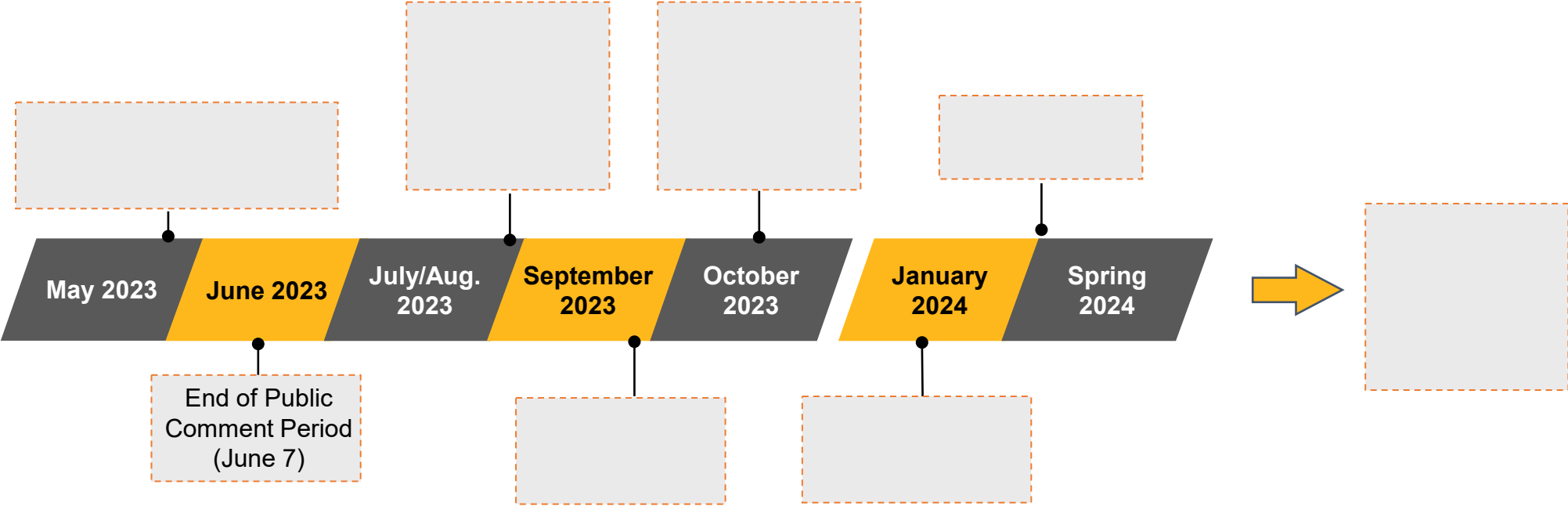


- **We are committed** to working with residents and businesses in the area on construction planning, mitigation measures and post-construction monitoring.
- **We are committed** to ensuring areas that are impacted during construction are restored as close to pre-construction condition as possible.
- **We are committed** to applying mitigation measures to prevent or reduce the level of impact. We will work with the residents and business owners to ensure issues are resolved collaboratively.
- **We are committed** to protecting the health and safety of all individuals affected by our activities. The safety of the public, our communities and our employees is our top priority.
- **We are committed** to safety in our processes, our people and our technologies, to ensure the safe construction and operation of our pipelines. We continually perform routine maintenance and, if required, implement repairs or other actions across our entire pipeline system.

Example of site restoration after the pipe has been installed

Proposed project timeline

The Environmental Study is underway. It is anticipated that the Environmental Report (ER) will be submitted to the Ontario Pipeline Coordinating Committee (OPCC) for review in August 2023.



Next steps – submit your comments!



 Please fill out the comment form online or submit by email



Email: EastHarbourEA@wsp.com



End of comment period: June 7, 2023

All comments and questions submitted for this project will be collected and considered in the development of an Environmental Report that will be part of the public record and will be made available to individuals or organizations with an interest in this project. Under the Freedom of Information and Protection Privacy Act, personal information such as name and address will not be included in the Environmental Report but may be released, if requested in accordance with the Act, to any person as part of the review of the Environmental Report.

Thank You!

Thank you for participating in the virtual public information session for the East Harbour Relocation Project!

If you have comments or questions, please contact:



Kristin Kimpinski
Environmental Advisor



Aisha Lewis
Environmental Planner
416-565-1537

Email: EastHarbourEA@wsp.com

Project Website: enbridgegas.com/EastHarbour