

Proposed 2024 Bluewater and Mandaumin Well Drilling Project

Virtual Public Information Session

June 12, 2023 to June 18, 2023



DILLON
CONSULTING

The logo for Dillon Consulting, consisting of a stylized white graphic of two parallel lines curving upwards and to the right, with a dashed line following the curve. Below the graphic, the words "DILLON" and "CONSULTING" are stacked in a white, sans-serif font.

Welcome

This Virtual Public Information Session will be live for one week from **Monday, June 12, 2023 to Sunday, June 18, 2023.**

- You can provide your input on the 2024 Bluewater and Mandaumin Well Drilling Project by completing the comment form available on the Virtual Public Information Session website at www.BluewaterMandauminWellDrilling.ca. Please submit your comments by **Monday, June 26, 2023.**
- After Sunday, June 18, 2023, this presentation, accompanying video transcript, and the comment form will be available for download on the Enbridge Gas website at www.enbridgegas.com/2024WellProject.

Enbridge Gas' Commitment

Enbridge Gas provides safe and reliable delivery of natural gas to more than 3.8 million residential, commercial, and industrial customers across Ontario.



Enbridge Gas will carefully consider all input.

It is committed to involving community members and will provide up-to-date information in an open, honest, and respectful manner.



Enbridge Gas is committed to environmental stewardship and conducts all of its operations in an environmentally responsible manner.



Enbridge Gas' Environment, Health and Safety Policies



Enbridge Gas is committed to protecting the health and safety of all individuals affected by its activities.

Enbridge Gas will provide a safe and healthy working environment and will not compromise the health and safety of any individual.

Its goal is to have no workplace incidents and to mitigate, to the extent feasible, its impacts on the environment. To achieve this goal, Enbridge Gas will work with its consultants and contractors, stakeholders, peers, and others to promote responsible environmental practices and continuous improvement.

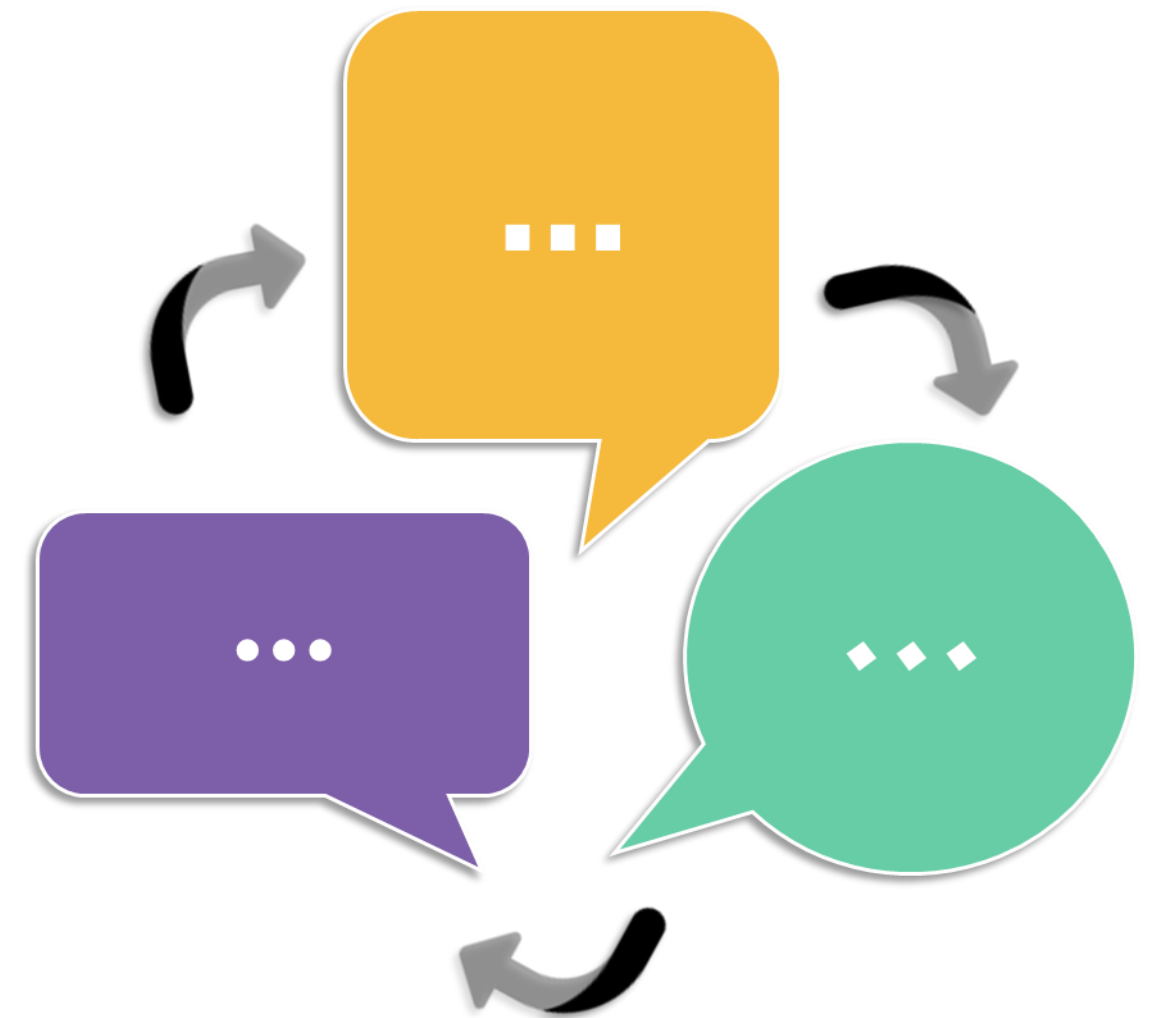


Enbridge Gas is committed to environmental protection and stewardship, and recognizes that pollution prevention, biodiversity, and resource conservation are key to a sustainable environment.

All employees are responsible and accountable for contributing to a safe working environment, for fostering safe working attitudes, and for operating in an environmentally responsible manner.

Purpose of the Public Information Session

- Provide information on the purpose of the project and illustrate the proposed construction activities that will occur at the Bluewater and Mandaumin well drilling sites
- Inform landowners, Indigenous communities, municipalities, stakeholders, regulatory authorities, and the public about the project and gather feedback about the project activities
- Give everyone the opportunity to participate during the process of completing the Environmental Report, which will be included in the application to the Ontario Energy Board
- Provide the opportunity to identify any unknown constraints and review proposed plans to mitigate impacts to the local community and the environment
- Create a space for you to ask questions and/or provide comments to Enbridge Gas or Dillon Consulting



Consultation Approach



We are committed to a comprehensive consultation process and want to hear from you about this project.

Our consultation approach is:

- **Inclusive:** reaching out to all who may be interested or affected and providing opportunities to become informed and get involved.
- **Transparent:** providing access to information and clear explanations for decisions.
- **Accountable:** explaining how your input will be used in the decision-making process.

An important part of the consultation process is working with Indigenous communities, stakeholders, and interested parties to identify and resolve potential project-related issues and concerns.

Enbridge Indigenous Peoples Policy: Introduction

- Enbridge Gas follows the Enbridge Inc. (Enbridge) Indigenous Peoples Policy.
- Enbridge recognizes the diversity of Indigenous Peoples who live where the company works and operates. They understand from history the destructive impacts on the social and economic wellbeing of Indigenous Peoples. Enbridge recognizes and realizes the importance of reconciliation between Indigenous communities and the broader society. Positive relationships with Indigenous Peoples, based on mutual respect and focused on achieving common goals, will create positive outcomes from Indigenous communities.
- Enbridge commits to pursue sustainable relationships with Indigenous Nations and groups in proximity to where Enbridge conducts business. To achieve this, Enbridge governs itself by the principles listed on the next slide.

Enbridge Indigenous Peoples Policy: Principles

Recognize

Enbridge **recognizes** the legal and constitutional rights of Indigenous Peoples, and the importance of the relationships between Indigenous Peoples and their traditional lands and resources. They commit to working with Indigenous communities in a manner that recognizes and respects those legal and constitutional rights and the traditional lands and resources to which they apply. Enbridge commits to ensuring that Enbridge projects and operations are carried out in an environmentally responsible manner.

Understand

Enbridge **understands** the importance of the United Nations Declaration of the Rights of Indigenous Peoples in the context of existing Canadian law and the commitments that the government has made to protecting the rights of Indigenous Peoples.

Engage

Enbridge **engages** in forthright and sincere consultation with Indigenous Peoples about their projects and operations through processes that seek to achieve early and meaningful engagement. Indigenous engagement helps define projects that may occur on lands traditionally occupied by Indigenous Peoples.

Commit

Enbridge **commits** to working with Indigenous Peoples to achieve benefits for them resulting from Enbridge's projects and operations, including opportunities in training and education, employment, procurement, business development, and community development.

Foster

Enbridge **fosters** an understanding of the history and culture of Indigenous Peoples among their employees and contractors, in order to create better relationships between Enbridge and Indigenous communities.

Enbridge Indigenous Peoples Policy: Commitment

The commitment is a shared responsibility involving Enbridge and its affiliates, employees and contractors. They will conduct business in a manner that reflects the principles listed on the previous slide. Enbridge will provide ongoing leadership and resources to effectively implement the principles, including the development of implementation strategies and specific action plans. Enbridge commits to periodically review this policy so that it remains relevant and respects Indigenous culture and varied traditions.

Regulatory Framework

For the project to proceed, a favourable report from the Ontario Energy Board (OEB) to the Minister of Natural Resources and Forestry is required, pursuant to section 40(1) of the *Ontario Energy Board Act*. The OEB requires that Enbridge Gas complete an Environmental Report, which includes an environmental assessment of the proposed works.



Role of the Ontario Energy Board

- As requested by the Minister of Natural Resources and Forestry, provide a report on the well drilling application submitted to the Ministry as per section 40(1) of the OEB Act.
- Once the application is submitted to the OEB, any party with an interest in the project may apply to the OEB to become intervenors or interested parties.
- Provides a public forum during the review of the application for people to participate in the decision-making process.
- Determines whether a proposed project is in the public interest.

Environmental Study Process

As part of the planning process, Enbridge Gas has retained Dillon Consulting to undertake an Environmental Study for the project. The Study will fulfill the requirements of the Ontario Energy Board's *Environmental Guidelines for the Location, Construction and Operation of Hydrocarbon Projects and Facilities in Ontario, 8th Edition (2023)*.

The Study will be conducted during the earliest phase of the planning process. As part of the Study, Enbridge Gas and Dillon Consulting will:

- Undertake engagement to understand the views of interested and potentially affected parties
- Consult and engage with Indigenous communities to understand interests and potential impacts
- Identify potential impacts of the project
- Develop environmental mitigation and protective measures to avoid or reduce potential impacts
- Develop an appropriate environmental inspection, monitoring, and follow-up program
- Submit the draft Environmental Report to the Ontario Pipeline Coordinating Committee
- Submit the final Environmental Report to the Ontario Energy Board

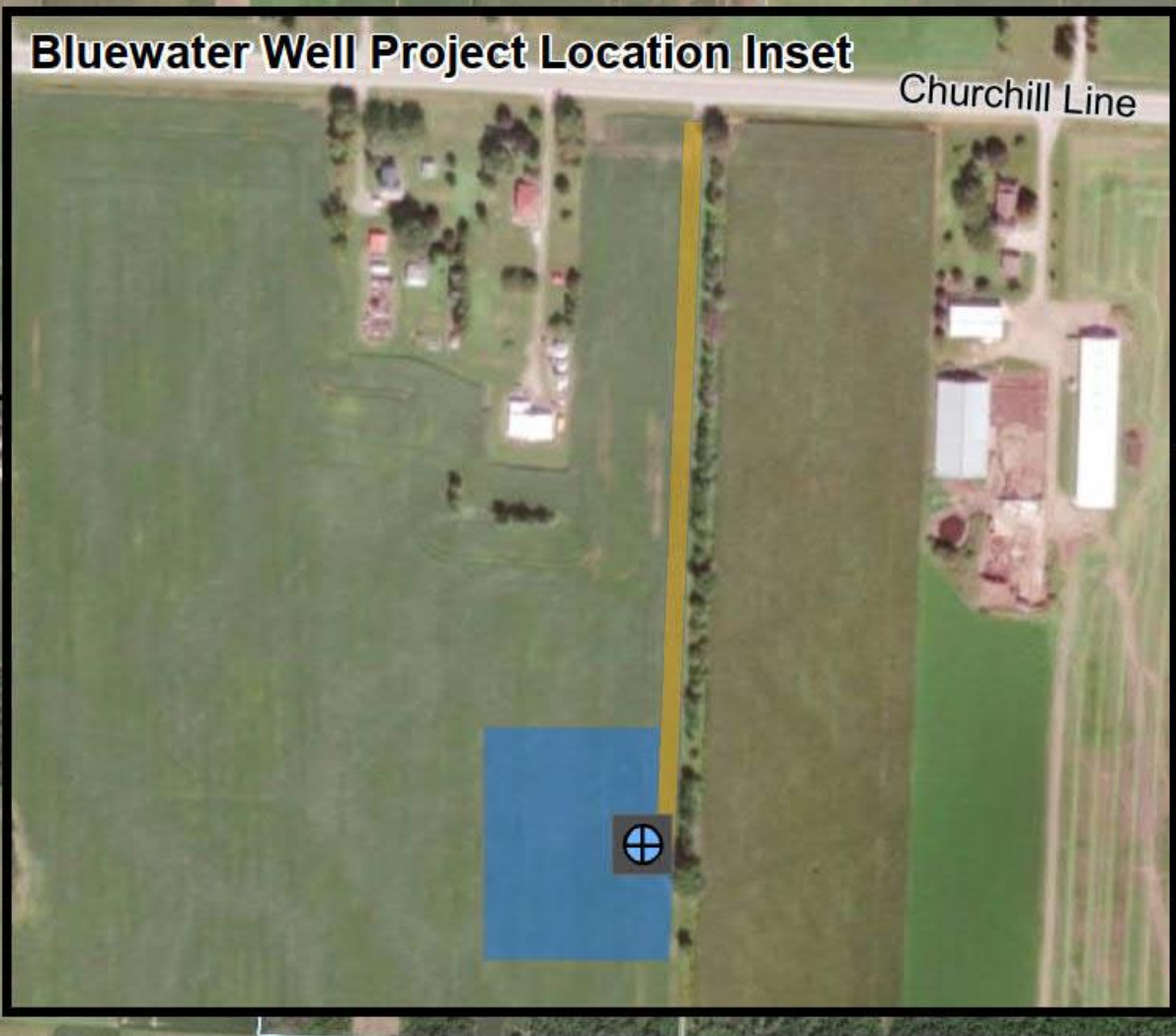
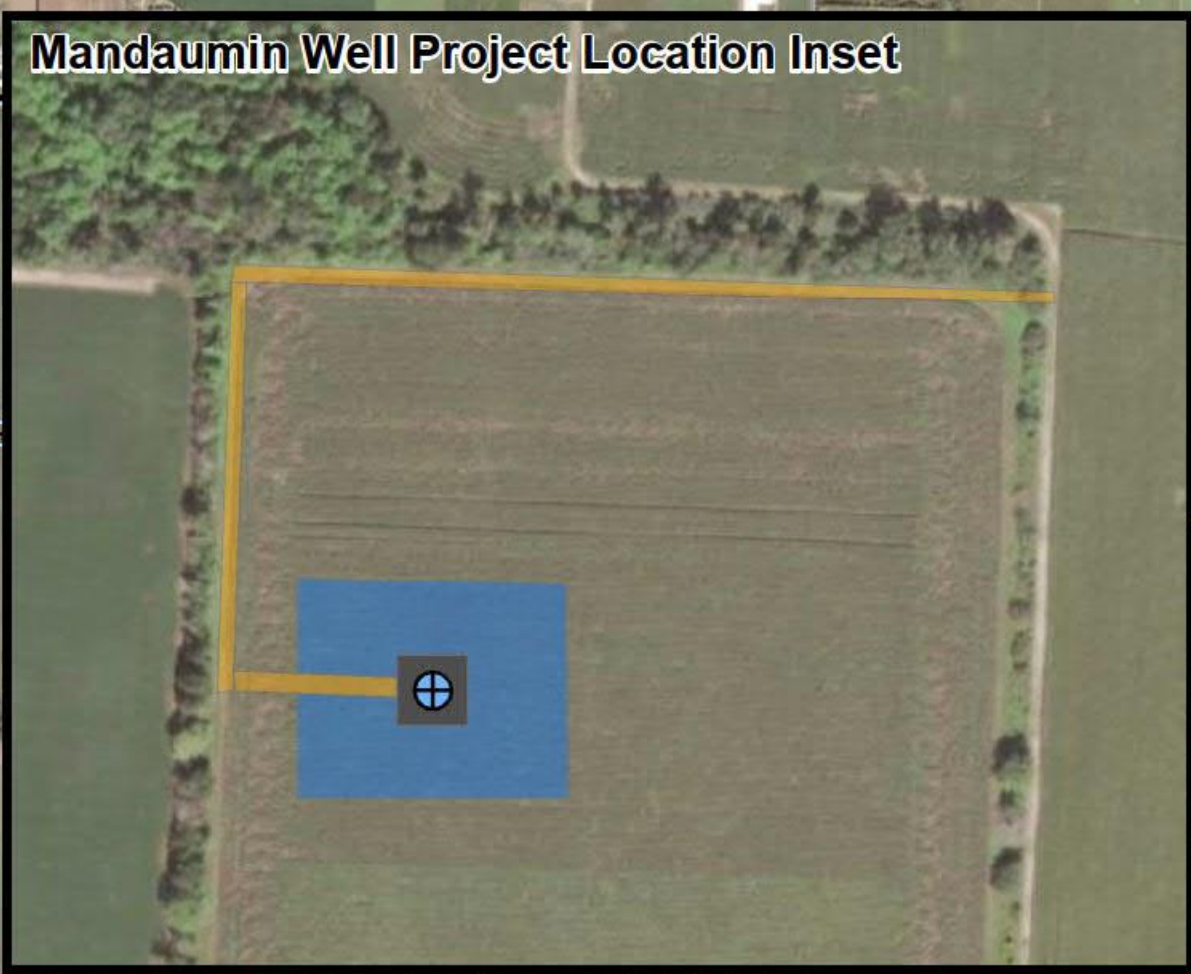
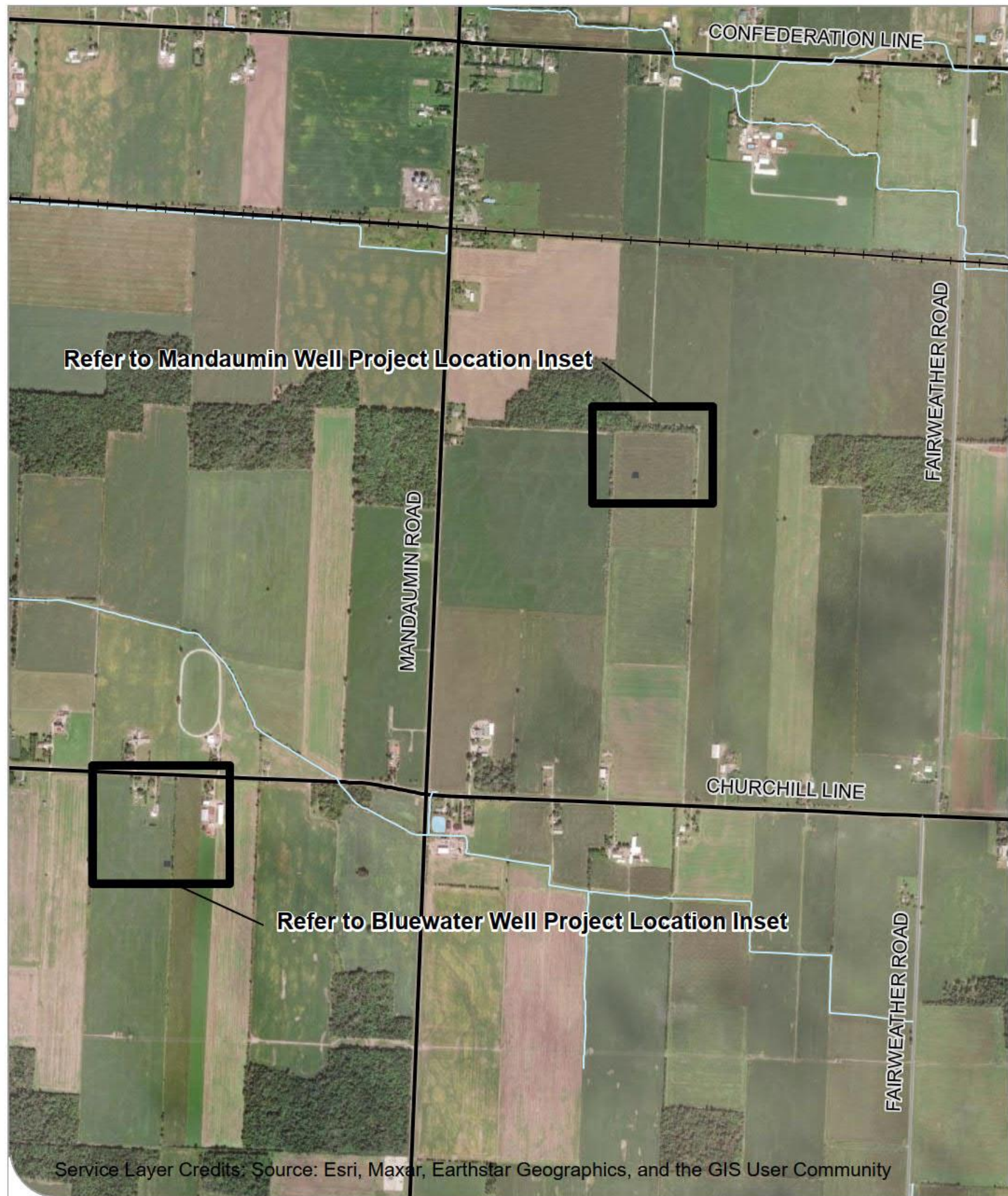
Project Overview

The project will involve the drilling of two new observation wells in Lambton County. One well will be located in the Bluewater Designated Storage Area (DSA) in the City of Sarnia and the other in the Mandaumin DSA in the Town of Plympton-Wyoming. The observation wells constructed for this project will be used to monitor the gas content and pressure in these underground storage formations and help ensure the continued safe and reliable operation of Enbridge Gas storage facilities.

Project activities at the Bluewater and Mandaumin drilling sites will commence with the construction of a temporary gravel drilling pad measuring up to 80 metres by 100 metres. Upon completion of drilling activities, a permanent gravel pad measuring 8 metres by 8 metres will be installed around the wells. Access to the Bluewater site will require a new permanent access road that will be 5 metres wide by roughly 300 metres long and access to the Mandaumin site will also require a new permanent access road, measuring 5 metres wide and approximately 500 metres long.

What is a Designated Storage Area?

DSAs are areas of land designated by the Ontario Energy Board (OEB) under section 36.1(1)(a) of the OEB Act, which contain geological formations suitable for the storage of natural gas underground.



2024 BLUEWATER AND MANDAUMIN WELL DRILLING PROJECT

ENBRIDGE GAS

SITE LOCATIONS

FIGURE 1

-  Proposed Observation Well
-  Proposed Temporary Pad (approx. 80m by 100m)
-  Proposed Permanent Access Road (approx. 5m wide)
-  Proposed Permanent Pad (approx. 8m by 8m)
-  Waterbody
-  Watercourse
-  Major Road
-  Minor Road
-  Railway

SCALE 1:20,000



MAP DRAWING INFORMATION:
DATA PROVIDED BY MNR



Natural Environment: Overview

A preliminary field investigation, including preliminary Ecological Land Classification (ELC), was conducted by a Dillon biologist to identify and assess existing natural features, including potential terrestrial and aquatic habitat, within the Bluewater and Mandaumin Study Areas in May 2023.

The results of the preliminary ELC survey determined lands in the Bluewater Study Area and Mandaumin Study Area are primarily classified as 'cultural' communities with some natural communities occurring at the boundary of the Mandaumin Study Area.

The project footprint of each site is mainly within active agricultural fields (annual row crops). Other cultural communities most common within the wider Study Areas include residential properties, fencerows, and hedgerows.

Natural communities encountered within the Mandaumin Study Area consisted of a deciduous forest dominated by Sugar Maple on the northern and western boundaries of the Study Area.



Natural Environment: Species at Risk

Based on a review of existing records, 22 Species at Risk (SAR) have the potential to occur within the project Study Area. Consideration of potential SAR/SAR habitat that may be present in the Study Area was determined based on the general habitat requirements of the species and the Ecological Land Classification communities identified during the preliminary field investigation conducted in May 2023.



Blanding's Turtle



Mottled Duskywing



Eastern Foxsnake



Bobolink



Eastern Flowering Dogwood



Eastern Hognose Snake



Five-lined Skink

The Ministry of the Environment, Conservation and Parks will be consulted during project planning to determine whether species-specific surveys are required to support potential permitting and/or approvals under the Endangered Species Act, 2007.

Natural Environment: Potential Effects and Mitigation Measures

Examples of Potential Effects

- Temporary loss or alteration of vegetation during construction.
- Temporary alteration of wildlife habitat and/or disruption of wildlife movement during construction.
- Temporary alteration of Species at Risk (SAR) habitat and/or disruption of SAR movement during construction.

Examples of Mitigation Measures

- Minimize the width of the construction area to reduce the amount of vegetation affected.
- Flag or fence off environmentally sensitive areas prior to construction.
- Document wildlife and SAR encounters and notify appropriate regulatory authorities, where required.
- Provide SAR identification sheets to workers that outline habitat, identifying characteristics and mitigation measures.

Socio-Economic Environment: Overview

The project occurs in the City of Sarnia and Town of Plympton-Wyoming (Lambton County). The project Study Areas are largely agricultural and rural residential in nature.

Statistics shared by the Sarnia-Lambton Economic Partnership indicate that, in 2022, the leading industries in Lambton County were healthcare and social assistance, manufacturing, retail trade, and construction.

The leading industries in the City of Sarnia in 2022 were healthcare and social assistance, retail trade, and manufacturing.

The leading industries in the Town of Plympton-Wyoming in 2022 were healthcare and social assistance, manufacturing, and construction.

Socio-Economic Environment: Potential Effects and Mitigation Measures

Examples of Potential Effects

- Temporary increase in nuisance noise during construction.
- Temporary traffic disruptions during construction.
- Temporary increase in wastes during construction.

Examples of Mitigation Measures

- Construction activities will be carried out in compliance with municipal noise by-laws with respect to noise and construction equipment usage. Applicable noise by-law exemptions will be sought if construction activities cannot be avoided on statutory holidays, Sundays, or at night.
- Traffic access will be maintained, where possible, during construction. Good management and best practices will be implemented during construction to minimize traffic disruption. If required, temporary detour routes will be provided to reduce potential impacts to commuters.
- Solid waste will be collected and disposed of appropriately in accordance with applicable regulations at a licensed waste facility.

Cultural Heritage Resources: Archaeology

- Combined Stage 1 and Stage 2 Archaeological Assessments are currently being completed for each project site.
- Few previous archaeological assessments have occurred in the project area.
- The desktop review has not identified any registered archaeological sites in the immediate vicinity of the project lands. In the general area of Wyoming, Indigenous archaeological sites ranging from the Late Paleo (8400 to 8000 BCE) to Late Woodland (900 to 1650 CE) and 19th century Settler sites have been identified.
- A desktop review of the project will be presented in the combined Stage 1 and Stage 2 Archeological Assessment Reports that will be appended to the Environmental Report.



Cultural Heritage Resources: Built Heritage and Cultural Heritage Landscapes

A Cultural Heritage Screening conducted for the project identified properties of possible Cultural Heritage Value or Interest (CHVI) at both project sites.

A Cultural Heritage Report: Existing Conditions and Preliminary Impact Assessment will be completed for each property to determine if CHVI is present. These reports may include the assessment of any potential impacts to heritage attributes and recommend appropriate mitigation measures.

The results of the high-level Cultural Heritage Screening found the following:

- Late 19th to early 20th century rural residential/agricultural properties with structures over 40 years old
- No other notable features or landscapes
- No adjacent cemeteries
- Neither property is a known municipal, provincial, or federally-listed or designated heritage property

Wellhead Design, Construction and Safety

Design and Safety



Enbridge Gas takes many steps to safely and reliably operate their network of natural gas systems and storage facilities, such as:

- Designing, constructing, and testing systems and facilities to meet or exceed requirements set by industry standards and regulatory authorities;
- Ensuring that any work is respectful of community activities, regulations and bylaws;
- Continuously monitoring their network and facilities; and
- Performing field surveys to detect potential issues and confirm the integrity of the storage facilities.

Construction



The construction work is temporary. Once the well drilling activities are complete, the project areas will be restored to as close to pre-construction condition as possible.

General Construction Overview

Typical observation well drilling activities involve drilling with a rotary rig then running casing, and cementing the hole in place from larger to smaller diameters:

1. Surface casing (set into bedrock to protect drinking water)
2. Intermediate casing (isolates storage gas zones)
3. Production casing (isolates storage gas zones)

The final activity is the installation of a wellhead which meets industry standards.



Photo 1. Photo of typical well drilling equipment



Photo 2. Photo of a typical wellhead configuration for an observation well

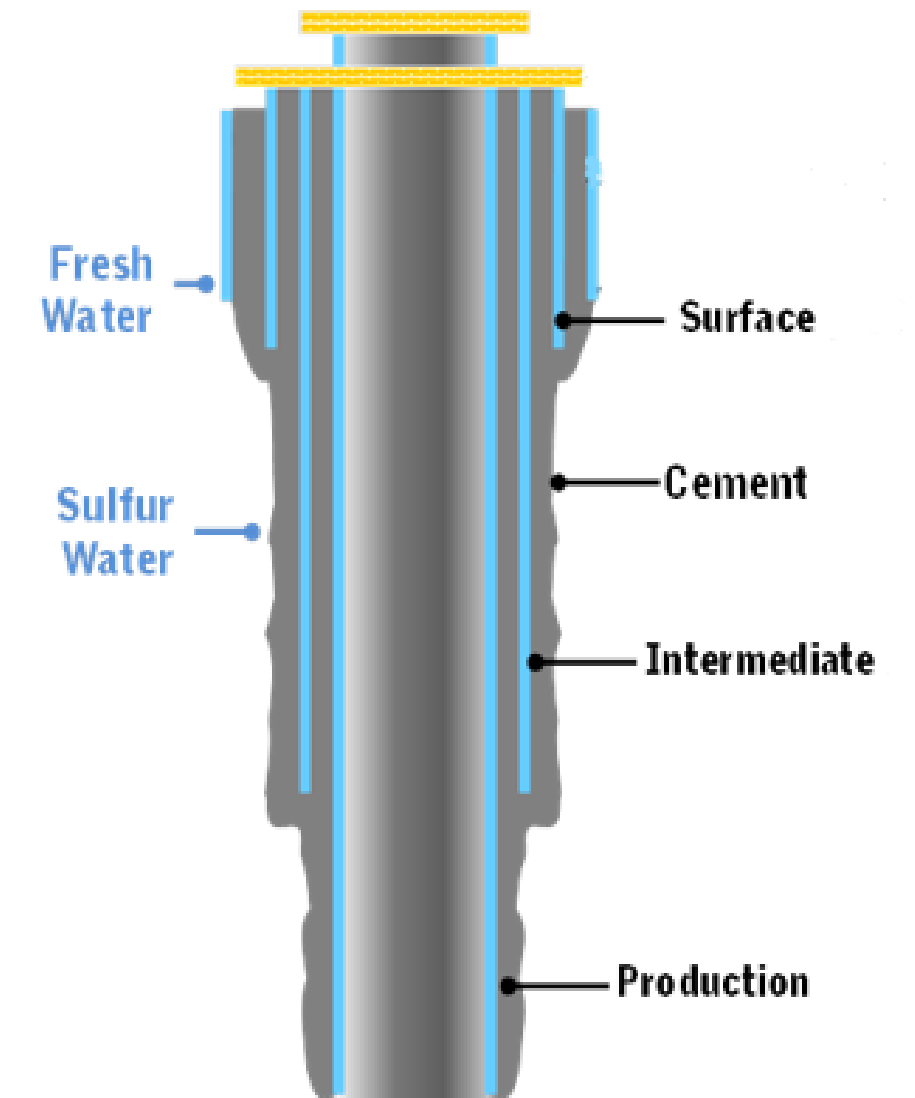


Figure 1. Typical cross-section of an observation well configuration

Mitigation and Monitoring



Enbridge Gas is committed to working with the community on construction planning, mitigation, and post-construction monitoring. Post-construction monitoring will be conducted so that impacted areas are restored to as close to pre-construction conditions as possible.

Enbridge Gas recognizes that the construction of the observation wells may result in short-term adverse impacts and they commit to applying mitigation measures to reduce these impacts and work with affected municipalities and landowners so that issues are resolved in a timely manner.

Environmental Assessment Process and Project Schedule

Date	Activity
Early May 2023	Notice of Upcoming Project
Late May to Early July 2023	Baseline Data Collection and Desktop Review
June 1, 2023	Notice of Study Commencement
June 12 to June 18, 2023	Virtual Public Information Session (We are here)
June 26, 2023	Last Day for Public Comments for Inclusion in the Draft Environmental Report
Late May to Early July 2023	Identify Potential Effects and Mitigation Measures for Well Drilling Activities
Late May to Early July 2023	Effects Assessment and Cumulative Effects Assessment
July 17 to August 28, 2023	Environmental Report submitted to Ontario Pipeline Coordinating Committee for 42-day Review Period
August 2023	Anticipated date for submission of the Well Drilling License Applications to the Ministry of Natural Resources and Forestry
Fall 2023	Potential Construction Start – Early Activities (access roads and pads)
Spring 2024	Tentative Well Drilling Start Date (pending receipt of all permits and approvals)
Summer 2024	Potential Construction Completion Date

Following the Virtual Public Information Session, the most up-to-date project schedule can be found on the Enbridge Gas website: www.enbridgegas.com/2024WellProject



Continuous Stakeholder Engagement

Enbridge Gas is committed to open dialogue throughout the environmental assessment and the OEB application process. Stakeholders will have the opportunity to remain engaged in the process after the environmental assessment is completed, through:

- Contacting project team members (project contact information provided on next slide)
- Visiting the Enbridge Gas project website at www.enbridgegas.com/2024WellProject



Thank you for participating in our
Virtual Public Information Session!

- We want to hear from you! Please complete the project comment form on the Virtual Public Information Session website at www.BluewaterMandauminWellDrilling.ca.
- After Sunday, June 18, 2023, this presentation, accompanying video transcript, and the comment form will be available for download on the Enbridge Gas website at www.enbridgegas.com/2024WellProject.
- Please submit your feedback by **Monday, June 26, 2023** so it can be considered in the draft Environmental Report.

Project Contact Information:

Email: BluewaterMandauminWellDrilling@dillon.ca

Phone: 416-229-4646, ext. 2048

Stay Informed