



Selwyn Community Expansion Project Virtual Information Session

Presented on behalf of Enbridge Gas



Selwyn Community Expansion Project

Virtual Information Session | Presented on behalf of Enbridge Gas



Welcome

Thank-you for viewing the Virtual Information Session for the Selwyn Community Expansion Project.

- To navigate through the presentation, press the next button to move forward and the return button to view the previous slide.
- You can mute the audio at any time by pressing the speaker icon.
- The presentation slides as well as the audio script are available for download (see the Resources tab in the top right corner).
- Questions and comments can be submitted using the questionnaire found in the Resources tab.
- If you would like to receive future Project updates, please complete the Contact Information section of the questionnaire.

Our commitment

- Enbridge Gas is committed to involving Indigenous communities, agencies, interest groups, and community members.
- We will provide up-to-date information in an open, honest, and respectful manner, and will carefully consider your input.
- Enbridge Gas provides safe and reliable delivery of natural gas to more than 3.8 million residential, commercial, and industrial customers across Ontario.
- Enbridge Gas is committed to environmental stewardship and conducts its operations in an environmentally responsible manner.



Selwyn Community Expansion Project

Virtual Information Session | Presented on behalf of Enbridge Gas



Purpose of the Virtual Information Session

- Provide a safe alternative to an in-person meeting due to current health risks associated with in-person gatherings and physical distancing requirements set out by the Province of Ontario and the Government of Canada.
- Consult with Indigenous communities, and engage with members of the public, and regulatory authorities regarding the proposed pipeline route, potential impacts, and proposed mitigations.
- Provide an opportunity for these individuals and affected landowners and the general public to review the proposed Project, ask questions, and/or provide comments to representatives from Enbridge Gas and Stantec.



Selwyn Community Expansion Project

Virtual Information Session | Presented on behalf of Enbridge Gas



Land Acknowledgement

We respectfully acknowledge that the proposed Project area is located in Treaty 20 and in the traditional territory of the Michi Saagiig (Mississauga) and Chippewa Nations, collectively known as the Williams Treaties First Nations, which include: Curve Lake First Nation, Hiawatha First Nation, Alderville First Nation, Mississaugas of Scugog Island First Nation, Chippewas of Rama First Nation, Beausoleil First Nation, and Chippewas of Georgina Island First Nations.

The Project area is also located on the ancestral lands of the Huron-Wendat Nation.



Selwyn Community Expansion Project

Virtual Information Session | Presented on behalf of Enbridge Gas



Indigenous Peoples Policy

Enbridge Gas recognizes the diversity of Indigenous Peoples who live where we work and operate. We understand from history, the destructive impacts on the social and economic wellbeing of Indigenous Peoples. Enbridge Gas recognizes the importance of reconciliation between Indigenous communities and the broader society. Positive relationships with Indigenous peoples, based on mutual respect and focused on achieving common goals, will create positive outcomes for Indigenous communities. Enbridge Gas commits to pursue sustainable relationships with Indigenous Nations and groups in proximity to where Enbridge Gas conducts business. To achieve this, Enbridge Gas will govern itself by the following principles:

- We recognize the legal and constitutional rights possessed by Indigenous peoples, and the importance of the relationship between Indigenous Peoples and their traditional lands and resources. We commit to working with Indigenous communities in a manner that recognizes and respects those legal and constitutional rights and the traditional lands and resources to which they apply. We commit to ensuring that our Projects and operations are carried out in an environmentally responsible manner.
- We understand the importance of the United Nations Declaration on the Rights of Indigenous Peoples in the context of existing Canadian law and the commitments that the government has made to protecting the rights of Indigenous Peoples.
- We engage in forthright and sincere consultation with Indigenous Peoples about Enbridge Gas Projects and operations through processes that seek to achieve early and meaningful engagement. Indigenous engagement help define our Projects that may occur on lands traditionally occupied by Indigenous Peoples.
- We commit to working with Indigenous Peoples to achieve benefits for them resulting from Enbridge Gas Projects and operations, including opportunities in training and education, employment, procurement, business development, and community development.
- We foster understanding of the history and culture of Indigenous Peoples among Enbridge Gas employees and contractors, in order to create better relationships between Enbridge Gas and Indigenous communities.

This commitment is a shared responsibility involving Enbridge Gas and its affiliates, employees and contractors. We will conduct business in a manner that reflects the above principles. Enbridge Gas will provide ongoing leadership and resources to effectively implement the above principles, including the development of implementation strategies and specific action plans. Enbridge Gas commits to periodically review this policy so that it remains relevant and respects Indigenous culture and varied traditions.



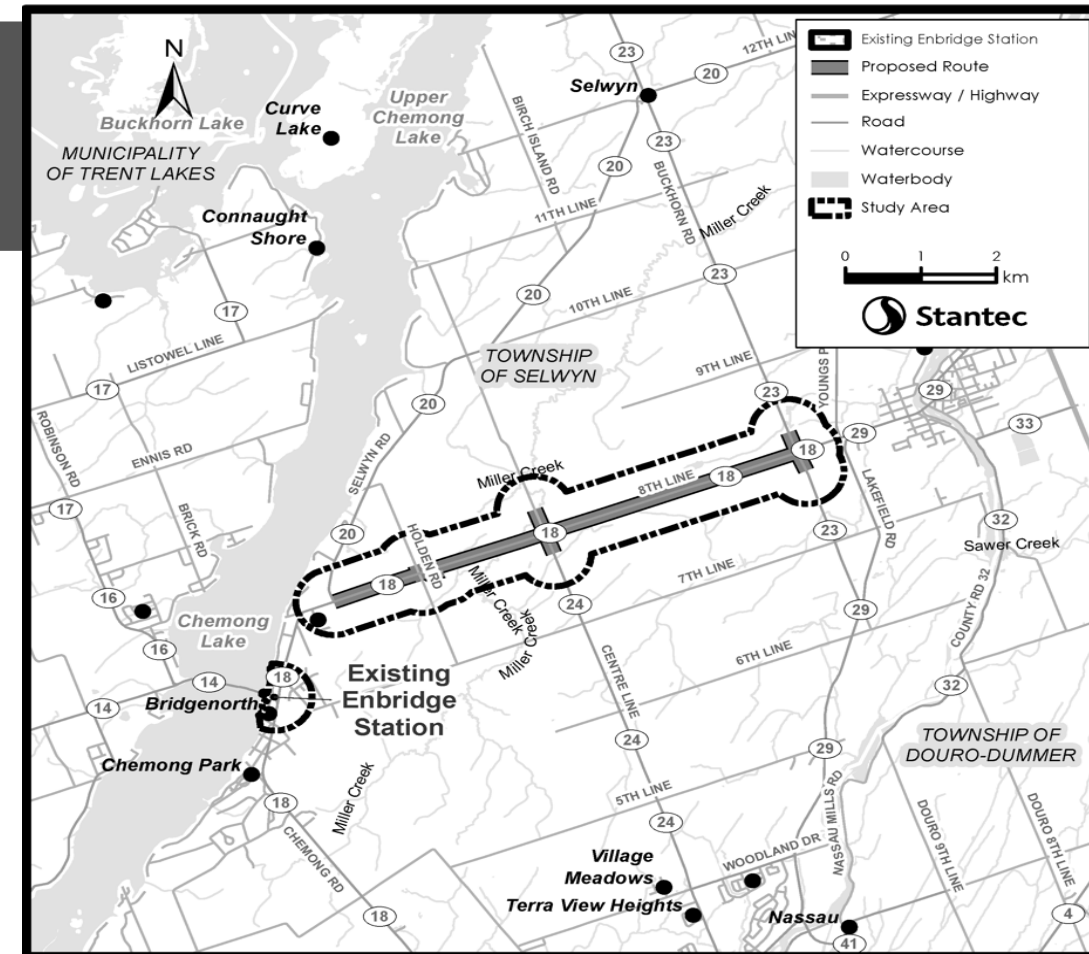
Selwyn Community Expansion Project

Virtual Information Session | Presented on behalf of Enbridge Gas



Project Overview

- The Project will involve the installation of up to approximately 8.4 kilometers (km) of 2- and 6-inch Nominal Pipe Size (NPS) natural gas pipeline to be located primarily in the road allowance of 8th Line.
- The Proposed Route will tie into the existing Enbridge Gas system at the intersection of 8th Line and Selwyn Road and will travel east to the terminal tie-in point at 8th Line and Buckhorn Road. The Proposed Route has been developed for purpose of an assessment of potential environmental and socioeconomic impacts and does not represent the final Project scope / design that will provide access to natural gas to end-use customers.



Selwyn Community Expansion Project

Virtual Information Session | Presented on behalf of Enbridge Gas



Environmental Study Process

As part of the planning process, Enbridge Gas has retained Stantec to undertake an Environmental Study for the Project. The Environmental Study will fulfill the requirements of the Ontario Energy Board's (OEB) "*Environmental Guidelines for the Location, Construction, and Operation of Hydrocarbon Pipelines and Facilities in Ontario, 7th Edition (2016)*".

The Environmental Study will be conducted during the earliest phase of the planning process. As part of the Study, Enbridge Gas / Stantec will:

- Undertake engagement to understand the views of interested and potentially affected parties.
- Consult and engage with Indigenous communities to understand interests and potential impacts.
- Identify potential impacts of the Project.
- Develop environmental mitigation and protective measures to avoid or reduce potential impacts.
- Develop an appropriate environmental inspection, monitoring, and follow-up program.



Selwyn Community Expansion Project

Virtual Information Session | Presented on behalf of Enbridge Gas



Ontario Energy Board (OEB) Review and Approval Process

The Environmental Report, summarizing the results of the Environmental Study, will accompany Enbridge Gas' application to the OEB as part of the application requesting a leave to construct (LTC) for the Project. It is anticipated that the Environmental Report for the study will be completed in March 2022, after which Enbridge Gas will file the LTC application. The application to the OEB will include the following information on the Project:

- The need for the Project
- Environmental Report with mitigation measures
- Project costs and economics
- Pipeline design and construction considerations
- Land requirements
- Consultation and engagement with Indigenous Communities and stakeholders

Additional information about the OEB process can be found at:
www.ontarioenergyboard.ca

The OEB will then hold a public hearing to review the Project. If the OEB determines that the Project is in the public interest, it will approve construction of the Project.



Selwyn Community Expansion Project

Virtual Information Session | Presented on behalf of Enbridge Gas



Determining a Proposed Route

To determine the location and extent of the Proposed Route, Enbridge Gas considered constraints in the study area such as natural environment features, slope, topography, socio-economic features, including cultural heritage features, and landscapes. To mitigate impacts and constraints to these features, opportunities to follow existing linear infrastructure were identified.

The Proposed Route, as shown on slide 6 of this presentation, follows existing linear infrastructure (i.e., municipal road allowances) and avoids, to the extent possible, existing environmental and socio-economic features.

The study area encompasses a broader area beyond the Proposed Route to account for any potential impacts and routing modifications that may arise during the planning process. Since the primary objective of Community Expansion Projects is to maximize customer attachments, an “Alternatives To” analysis to the Proposed Route was deemed not to be required as Project / routing alternatives are not expected to be reasonable or economically feasible.

An interactive map that shows the extent of the Proposed Route can be accessed at:
<https://solutions.ca/SelwynEA>



Selwyn Community Expansion Project

Virtual Information Session | Presented on behalf of Enbridge Gas



Consultation and Engagement

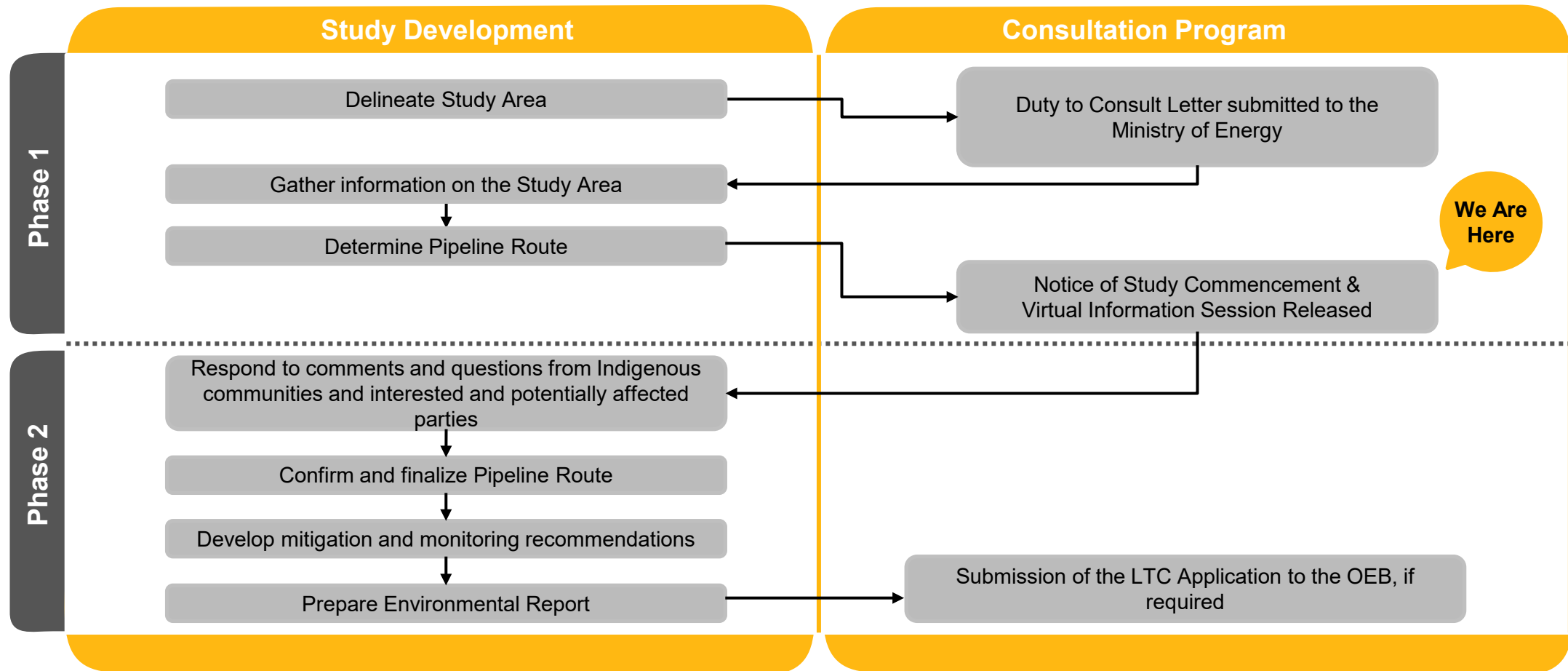
- Consultation and engagement are key components of the Environmental Study.
- At the outset of the Project, Enbridge Gas submits a Project Description to the Ministry of Energy; upon review, the Ministry of Energy determines potential impacts on Aboriginal or treaty rights and identifies Indigenous communities that Enbridge Gas must consult with during the Environmental Study and entirety of the Project.
- The consultation and engagement program that is developed during the Environmental Study helps identify and address Indigenous community and stakeholder concerns and issues, provides information on the Project, and allows for participation in the Project review and development process.
- Input will be used to help finalize the pipeline route and mitigation plans for the Project.
- Once the LTC application is made to the OEB, any party with an interest in the Project, including members of the public, can participate in the OEB's review process.



Selwyn Community Expansion Project

Virtual Information Session | Presented on behalf of Enbridge Gas

Environmental Study Process



Selwyn Community Expansion Project

Virtual Information Session | Presented on behalf of Enbridge Gas



Environment, Health and Safety Policy

Our commitment

- Enbridge Gas is committed to protecting the health and safety of all individuals affected by our activities.
- Enbridge Gas will provide a safe and healthy working environment and will not compromise the health and safety of any individual.
- Our goal is to have no workplace incidents and to mitigate, to the extent feasible, impacts on the environment. To achieve this goal, Enbridge Gas will work with our stakeholders, peers, and others to promote responsible environmental practices and continuous improvement.
- Enbridge Gas is committed to environmental protection and stewardship, and we recognize that pollution prevention, biodiversity, and resource conservation are key to a sustainable environment.
- All employees are responsible and accountable for contributing to a safe working environment, for fostering safe working attitudes, and for operating in an environmentally responsible manner.



Selwyn Community Expansion Project

Virtual Information Session | Presented on behalf of Enbridge Gas



Access and Land Requirements

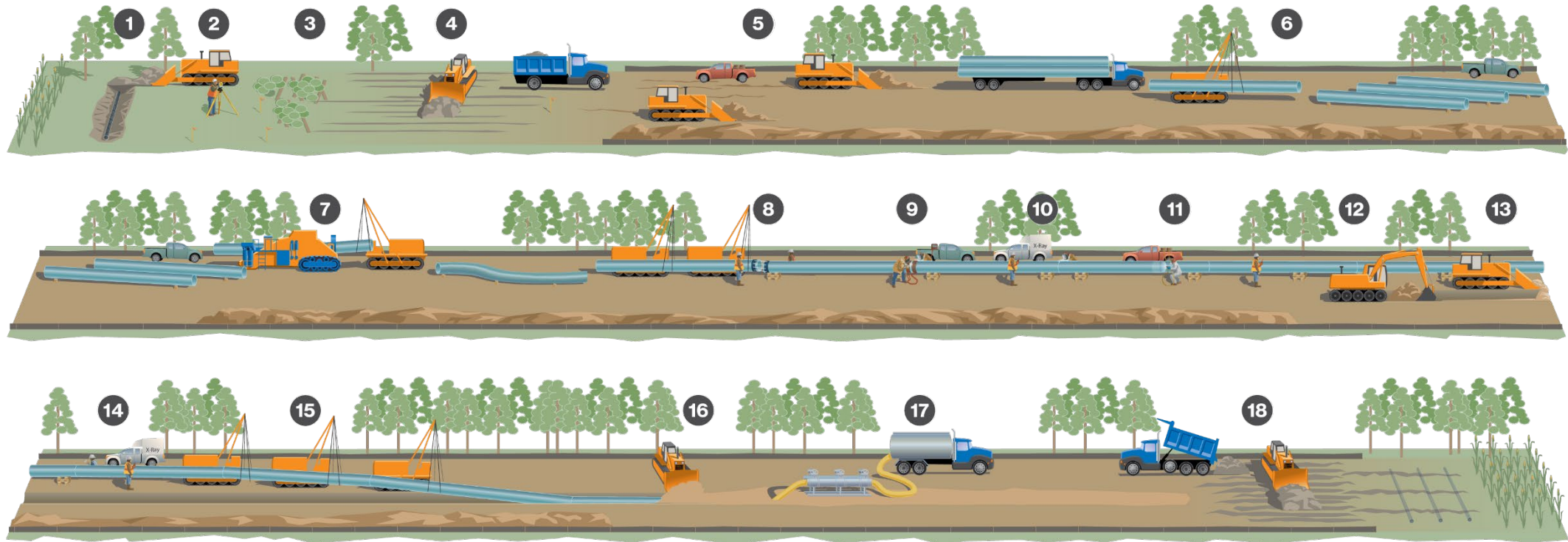
- While the majority of the pipeline route will be constructed within municipal road allowances, some circumstances requiring access agreements, permanent easement or temporary working space during construction could result in the need for additional land outside of road allowances.
- Enbridge Gas has a comprehensive Landowner Relations Program that uses a dedicated Lands Advisor who would:
 - Provide direct contact & liaison between landowners and Enbridge Gas.
 - Be available to the landowner during the length of the Project and throughout construction activities.
 - Address the concerns and questions of the landowner.
 - Act as a singular point of contact for all landowners.
 - Address any landowner questions and any legal matters relating to temporary use of property, access agreements, permanent easements, and impacts or remedy to property.



Selwyn Community Expansion Project

Virtual Information Session | Presented on behalf of Enbridge Gas

Constructing an Enbridge Gas Pipeline



- | | | | | | |
|----------------------------|-----------------------------------|-----------------------|---|---|---|
| 1. Pre-construction tiling | 4. Right-of-way topsoil stripping | 7. Field bending pipe | 10. X-ray or ultrasonic inspection, weld repair | 13. Padding trench bottom | 16. Backfilling |
| 2. Surveying and staking | 5. Front-end grading | 8. Lining-up pipe | 11. Field coating | 14. Final inspection and coating repair | 17. Hydrostatic testing |
| 3. Clearing | 6. Stringing pipe | 9. Welding process | 12. Digging the trench | 15. Lowering pipe | 18. Site restoration and post-construction tiling |



Selwyn Community Expansion Project

Virtual Information Session | Presented on behalf of Enbridge Gas



Socio-economic Features

The Project will mainly be constructed in municipal road allowances. As a result of construction, private businesses, agricultural operations, and homes along the pipeline route may be impacted.

Potential Effects

- Temporary increases in noise, dust, and air emissions.
- Increased construction traffic volumes.
- Temporary impairment of the use and enjoyment of residential/business properties.
- Vegetation clearing along the pipeline easement.

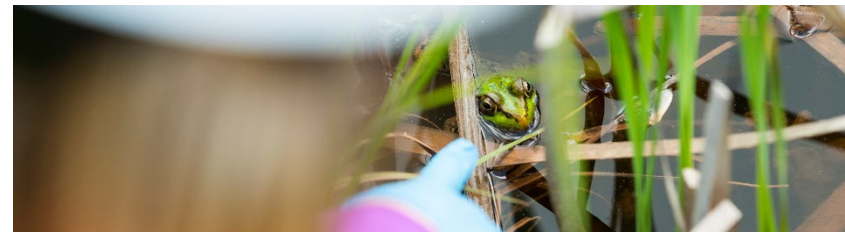
Example Mitigation Measures

- Provide access across the construction area.
- Restrict construction to daylight hours and adhere to applicable noise by-laws.
- Develop and implement a Traffic Control Plan.
- Place fencing at appropriate locations for safety.
- Implement a water well monitoring program.
- Making contact information for a designated Enbridge Gas representative available prior to and throughout construction.
- Dust control measures.
- Re-vegetation of cleared areas (seeding/planting).



Selwyn Community Expansion Project

Virtual Information Session | Presented on behalf of Enbridge Gas



Aquatic Resources

Enbridge Gas understands the importance of protecting watercourses, wetlands, and associated wildlife during construction and will implement appropriate mitigation measures to reduce possible environmental effects.

Potential Effects

- Disruption and alteration to aquatic species and habitat and/or nuisance effects.
- Increased erosion, sedimentation, and turbidity resulting from removal of vegetation.

Example Mitigation Measures

- Install erosion and sediment control measures.
- Obtain necessary agency permits and approvals.
- Conform to fish timing window guidelines.
- Horizontal Directional Drill under environmentally sensitive features (i.e., watercourses, wetlands, etc.)
- For in-channel construction, protect aquatic species through methods such as flow diversion/dewatering, fish rescue planning and manage sedimentation and turbidity.
- Restore and seed disturbed areas to establish habitat and reduce erosion, if necessary.
- Replant vegetation along waterways.

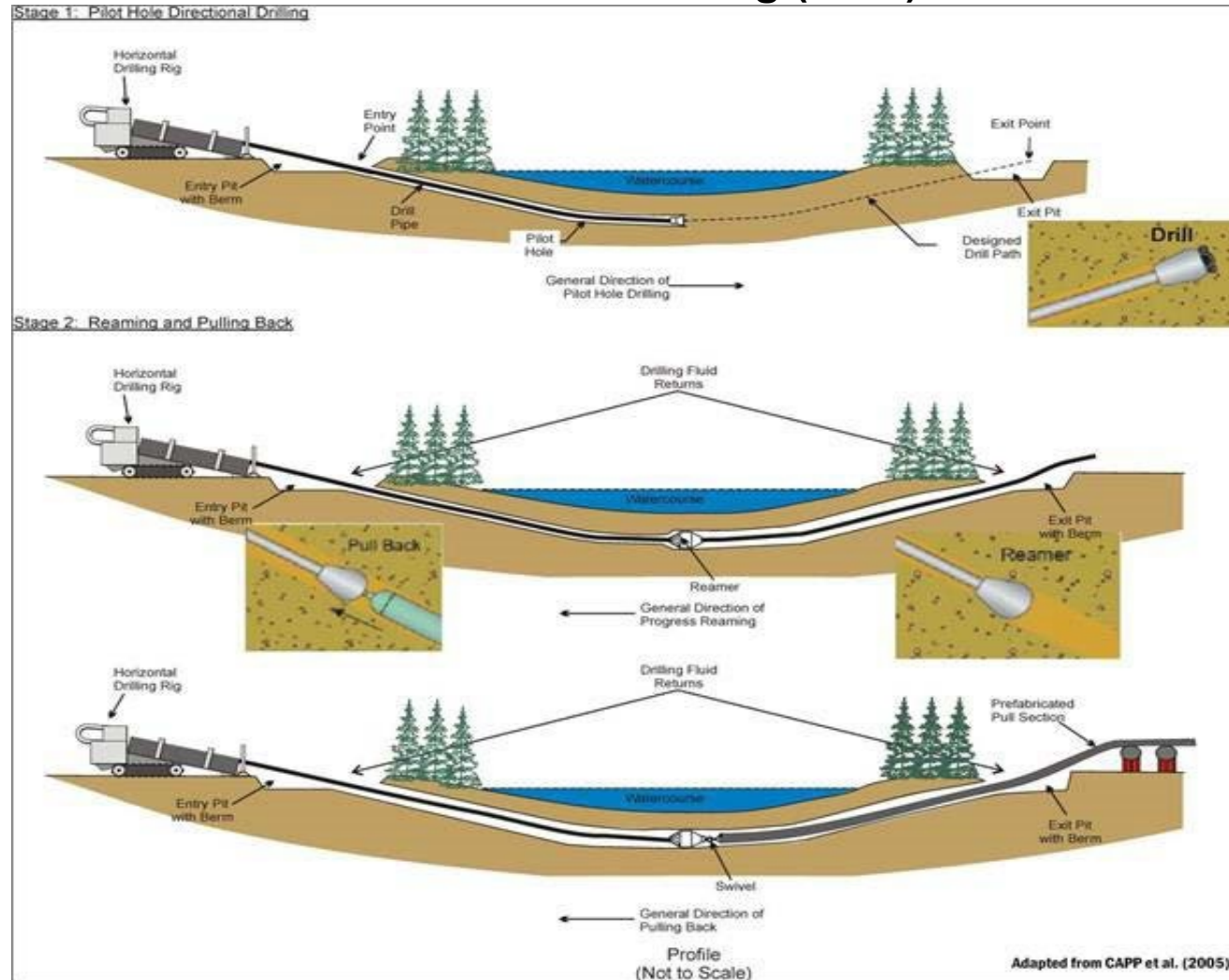


Selwyn Community Expansion Project

Virtual Information Session | Presented on behalf of Enbridge Gas



Horizontal Directional Drilling (HDD) Procedures



Selwyn Community Expansion Project

Virtual Information Session | Presented on behalf of Enbridge Gas



Cultural Heritage Resources

During construction, cultural heritage features such as archaeological finds, buildings, fences, and landscapes may be encountered. Detailed field surveys will be conducted by independent, third-party archaeologists and cultural heritage professionals, if required.

Potential Effects

- Damage or destruction of archaeological or cultural heritage resources.

Example Mitigation Measures

- Archaeological assessment of the construction footprint, with review and comment from the Ministry of Heritage, Sport, Tourism and Culture Industries (MHSTCI).
- Cultural heritage assessment (for built heritage features and cultural heritage landscapes) of the construction right-of-way, with review and comment from MHSTCI.
- Reporting of any previously unknown archaeological or cultural heritage resources uncovered, or suspected of being uncovered, during excavation.



Selwyn Community Expansion Project

Virtual Information Session | Presented on behalf of Enbridge Gas



Terrestrial Resources

During construction, natural environmental features such as wildlife habitat and vegetated/wooded areas may be crossed.

Potential Effects

- Damage or removal of vegetation and wildlife habitat in the construction area.
- Disturbance and/or mortality to local wildlife.

Example Mitigation Measures

- Conduct surveys (including Species at Risk surveys) in advance of construction to determine the potential presence of wildlife and wildlife habitat.
- Complete vegetation removal outside of migratory bird windows (typically from April 1 – August 31), to the extent possible.
- Clearly mark the construction area to avoid accidental damage.
- Restore and seed disturbed areas to establish habitat and reduce erosion, if required.
- Secure necessary permits and follow any conditions of approval.



Selwyn Community Expansion Project

Virtual Information Session | Presented on behalf of Enbridge Gas



Pipeline Design

The high-grade plastic and steel pipeline is designed to meet and/or exceed the regulations of the Canadian Standards Association (Z662 Oil and Gas Pipeline Systems) and the applicable regulations of the Technical Standards & Safety Association (TSSA).

Pipeline Safety and Integrity

We take many steps to ensure safe, reliable operation of our network of natural gas pipelines, such as:

- Design, construct, and test our pipelines to meet or exceed requirements set by industry standards and regulatory authorities,
- Continuously monitor the entire network, and
- Perform regular field surveys to detect leaks and confirm corrosion prevention methods are working as intended.



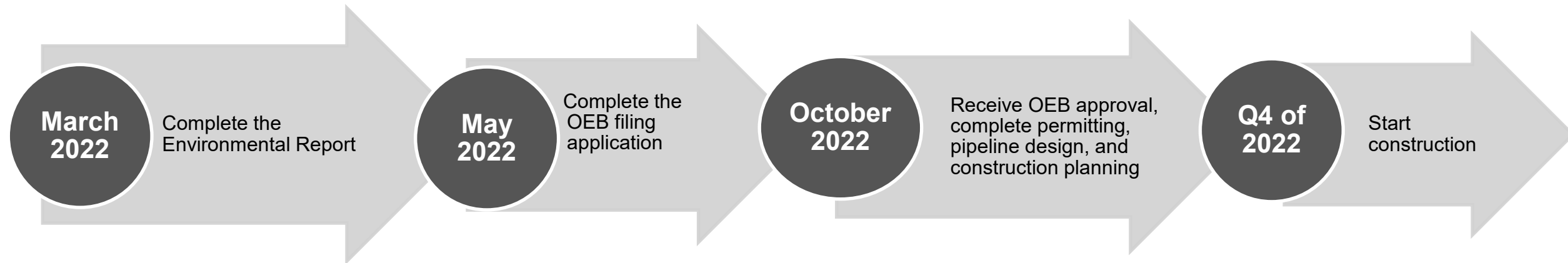
Selwyn Community Expansion Project

Virtual Information Session | Presented on behalf of Enbridge Gas



Next Steps

After this Virtual Information Session, we intend to pursue the following schedule of activities:



Selwyn Community Expansion Project

Virtual Information Session | Presented on behalf of Enbridge Gas



Thank-you!

On behalf of the Project team, thank-you for listening to the Virtual Information Session presentation. Please complete the Questionnaire, located in the Resources tab, by February 28, 2022, for your comments to be considered as part of the Environmental Report.

Kayla Ginter

Project Coordinator
Stantec Consulting Ltd.
300W-675 Cochrane Drive,
Markham, ON L3R 0B8
Phone: (226) 980-5347
Email: SelwynEA@Stantec.com

Chris Revak

Project Coordinator
Stantec Consulting Ltd.
300W-675 Cochrane Drive,
Markham, ON L3R 0B8
Phone: (705) 750-8873
Email: SelwynEA@Stantec.com

George Tatolis

Environmental Permitting Advisor
Enbridge Gas Inc.
500 Consumers Road
North York, ON M2J 1P8
Phone: 437-998-2873
Email: george.tatolis@enbridge.com

For more information about the proposed Project, please visit our Project website at: <https://www.enbridgegas.com/selwyn>

