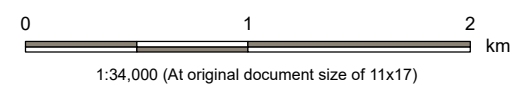
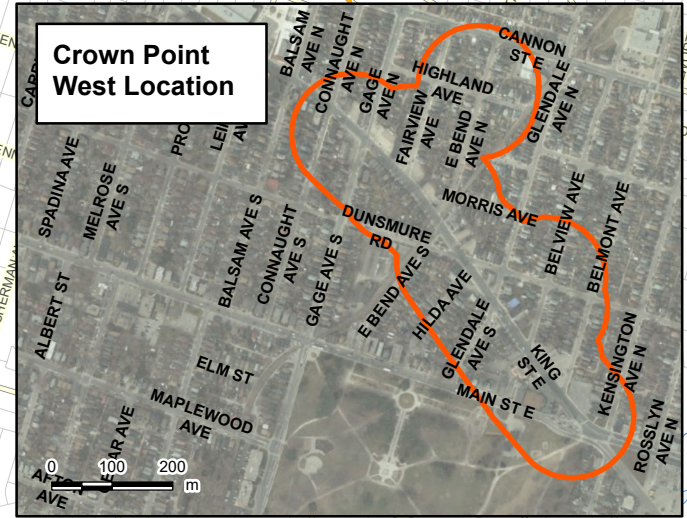
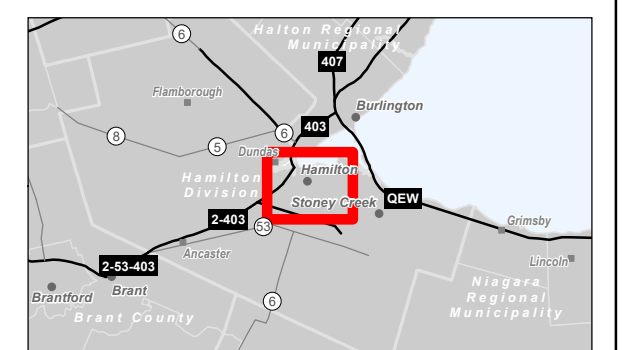


- Legend**
- Study Area
 - Expressway / Highway
 - Major Road
 - Minor Road
 - Watercourse (Intermittent)
 - Watercourse (Permanent)
 - Waterbody
 - Municipal Boundary, Upper
 - Municipal Boundary, Lower



- Notes**
1. Coordinate System: NAD 1983 UTM Zone 17N
 2. Base features produced under license with the Ontario Ministry of Natural Resources and Forestry © Queen's Printer for Ontario, 2023.
 3. Orthoimagery © First Base Solutions, 2023. Imagery Date, 2021.



DRAFT

Disclaimer: Stantec assumes no responsibility for data supplied in electronic format. The recipient accepts full responsibility for verifying the accuracy and completeness of the data. The recipient releases Stantec, its officers, employees, consultants and agents, from any and all claims arising in any way from the content or provision of the data.

Project Location: City of Hamilton
 Prepared by SPE on 2023-11-15

Client/Project: ENBRIDGE GAS INC. HAMILTON LIGHT RAIL TRANSIT PIPELINE RELOCATION PROJECT

Figure No. **1**
 Title **Study Area**

DRAFT